

**Inside:**

2022 Annual Meeting Notice

Drive-Thru Anniversary Party!

**“Watts” Inside**

Drive-Thru Anniversary Party! 3

2022 Good Neighbor Scholarship Winners 3

The Value of Electricity 4

Portable Generator Safety 4

Notice for CEC's 85<sup>th</sup> Annual Meeting 5

Easy Rhubarb Sauce 6

**Board of Directors**

Nancy Lendyak  
*President*

Kenneth Etzel  
*Vice President*

Althea Smith  
*Secretary/Treasurer*

John Campbell  
Kenneth Durrett  
Robert Smith  
Jody Weaver  
Richard Weaver



# PowerLines

Photo by Amy Polkabila of Grove City

**Too Few and Far Between**

*by Matthew Boshaw, CEO & General Manager*

As I recently sat through a refresher training regarding our Safety City program, I realized the topic of this article has not been safety since September of last year. My monthly articles have frequently had safety as the topic — in some years, two or three monthly articles have focused on our safety efforts. Given the importance of safety at Central Electric Cooperative (CEC) and to me personally, it has been too long.

As the circumstances of the past two years receive attention, it is even more important to keep the safety of our employees and the communities we serve top of mind. A waning pandemic, supply chain issues, and significant inflation are just a few concerns that have appropriately needed our attention as the year has unfolded. While important or even critical in nature, none can remove safety from our top

spot.

Safety takes priority over everything we do at CEC. It starts in our board room, where the board has made safety the highest priority in our mission statement and receives a monthly report on safety matters at the cooperative. It continues through the management team to all of our employees.

While navigating the concerns mentioned, we have maintained our safety related trainings, both required and more. Our regular inspections of our workplace and safety visits with crews have continued reinforcing the first priority of safety. Our Safety Committee incorporated pandemic requirements into their discussions, but maintained and expanded their recommendations for seasonal safety awareness. They have also taken an active role in creating an environment of working safely by reviewing all aspects of

**Too Few ... /Page 2**

## Too Few ... /From Page 1

our work utilizing the guidelines created by the National Cooperative Safety Achievement program. They have proactively created and recommended a defined communication plan for safety related items that has been adopted and is currently being implemented.

As I mentioned, we restarted our Safety City program to continue electrical safety education in the communities we serve. During the pandemic, we created a virtual version of this program to allow us greater flexibility and expand the audiences we can reach. As always, we continue to inspect our facilities and repair anything of safety concern, offering a greater degree of confidence that our facilities are safely providing this essential service.

These efforts all add value and demonstrate our commitment to safety at all levels. With that said, without the commitment of each of our employees to be personally responsible for their own safety, as well as that of the employees and members around them, the programs could not be successful. Ultimately, the programs are only as strong as those who implement them. We cannot constantly monitor every employee, member, or location on our system, and so it falls to each of us to take personal responsibility for our own safety. We need to diligently and relentlessly identify, eliminate or mitigate hazards to ensure we can safely return home each night. No safety program will ever motivate us to work safely. Instead, our

employees have each documented their respective personal reasons for working safely. Many have identified children, grandchildren, parents or other family members as their reason for working safely. My family is at the top of my reasons as well, but I have another selfish reason for wanting each of our employees to take their safety as seriously as I do. As I have shared with you before, I was the person responsible for notifying a spouse that her husband would not be coming home, and I will simply not do that again.

Safety is personal because it has to be, and it requires nothing less than a relentless dedication from each of us.

I would like to thank our membership for their continued support in our efforts to ensure that we are all continuously improving our safe work.

“Safety is personal because it has to be, and it requires nothing less than a relentless dedication from each of us.”

Matt Boshaw, CEO &  
General Manager

### Vote for Our Photo Contest!

Vote for the top five photos in our photo contest at [www.central.coop](http://www.central.coop). Online only voting will take place from June 17 to July 29.

Members without internet will be able to vote through the September issue of this newsletter.

## Drive-Thru Anniversary Party!

For everyone's safety, CEC is still refraining from large gatherings as a safety precaution. But that doesn't mean we can't celebrate!

This year marks CEC's 85<sup>th</sup> anniversary and we are celebrating with a drive-thru anniversary party! The drive-thru party will be on July 12 (the anniversary date of CEC founders signing CEC's official incorporation notice in 1937) from 10 a.m. until 1 p.m. at CEC's office in Parker.

The event will take place in the front parking lot of the building — near the lobby. You will be able to drive up, stop at the tent, collect a swag bag, and then continue on your way. All without ever getting out of your car! You will need to confirm your CEC membership to receive the items. To confirm your membership, staff members will look up your account using your name and address. The line will form at CEC's lobby entrance on Terwilliger Road.

The swag bag will include a gift, "piece of cake", historical booklet, and more! To help us be prepared for the number of participants, we strongly encourage all members planning to

attend to RSVP by June 28. RSVPs can be made on our website or by calling 800-521-0570.

CEC may substitute gift and treat options if participation is greater than anticipated. One swag bag per membership is permitted.

We hope you join us for this celebration. To learn more about our other anniversary celebrations, please visit [www.central.coop](http://www.central.coop).

YOU'RE INVITED TO OUR  
**ANNIVERSARY PARTY!**



**July 12**                      **10 am to 1 pm**  
 DATE                                      TIME

**716 Route 368, Parker PA 16049**  
 PLACE

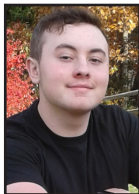
**Please RSVP by June 28.**

## 2022 Good Neighbor Scholarship Winners

Congratulations to the 2022 recipients of the Good Neighbor Scholarship! CEC awarded scholarships of \$2,500 each to 10 members (or members' children) who will further their education in 2022. For more information on this program, please visit [www.central.coop](http://www.central.coop).



**Jared Chantz**  
Butler Area High School



**Archer Ferris**  
Abeka Academy



**Anna Fleming**  
Providence Classical



**Mia Gourley**  
Redbank V. High School



**Paige Klingler**  
A-C Valley High School



**Rebecca Lander**  
Clarion University



**Anothony Scardina**  
Grove City College



**Cailyn Shaffer**  
A-C Valley High School



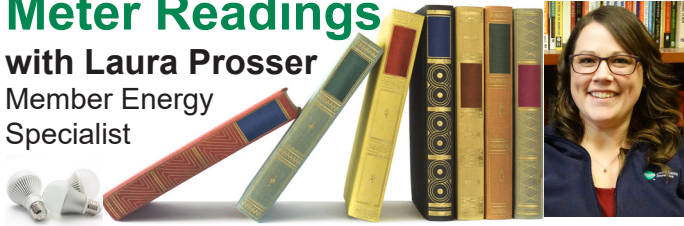
**Melody Shillito**  
Lakeview High School



**Kylee Surrena**  
Moniteau High School

## Meter Readings

with **Laura Prosser**  
Member Energy  
Specialist



Most of us use electricity, either directly or indirectly, at almost all times. Because electricity is so abundant and available with the simple flip of a switch, it's easy to take it for granted.

According to the Energy Information Agency, the typical U.S. household uses more air conditioning, appliances and electronics than ever before. The average home also contains 10 or more internet-connected devices. Considering everything that is powered by electricity, it's no wonder we occasionally might wince at the monthly bill. But keep in mind, it's no longer just the "light bill."

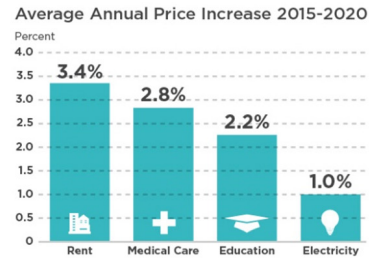
## The Value of Electricity

Electricity powers everything in our homes from water heaters and HVAC systems, to smartphones, TVs and Wi-Fi routers. At work and school, the need for electricity is also imperative, and increasing.

Over the last five years, the cost of rent increased 3.4%; medical care increased 2.8%; and education increased 2.2%. But the cost of electricity only increased 1%. Considering all the ways we depend on electricity, it remains a great value.

### **ELECTRICITY REMAINS A GOOD VALUE**

When you look at price increases of common expenses over the last five years, it's easy to see electricity remains a good value!



Sources: U.S. Bureau of Labor Statistics Consumer Price Index



## The Safety Linke



*Don't be a stranger, to electrical danger.*

### Portable Generator Safety

Portable generators offer many benefits when a long-term outage occurs. However, if generators are not used properly, things could turn deadly. Follow these tips to prevent misuse of generators.

- Be sure to follow manufacturers' directions for installation and operation.
- To prevent electric shock, make sure your generator is properly grounded. The operation manual should provide grounding procedures.
- Operate generators or other fuel-powered machines outside where deadly carbon monoxide fumes cannot enter the home.
- Only use the generator in a well-ventilated and dry area away from air intakes to the house. Do not use a generator in an attached garage.



Manager of Safety  
& Loss Control

**Dylan Linke**

- Do not operate more appliances and equipment than the generator can handle.
- Individual appliances should be plugged directly into the outlet of the generator using appropriately sized extension cords. Make sure the cords are rated for outdoor use, have a grounded, three-pronged plug, and are in good condition.
- Never connect generators directly to your home's wiring. The reverse flow of electricity can electrocute an unsuspecting utility worker.
- Never plug a generator into a household outlet.
- Do not refuel a generator while it is running.
- Turn off all equipment powered by the generator before shutting it down.
- Keep children and pets away from generators.

## Notice for CEC's 85<sup>th</sup> Annual Meeting

Due to continued concerns for everyone's safety, CEC has again decided to modify the format of its Annual Meeting and member appreciation event by foregoing the traditional public gathering at Whitehall Camp and Conference Center.

Each year, two CEC board member seats are up for reelection. Customarily, election ballots are mailed to members regardless of how many candidates are running for each director seat. However, to save the cost of running an unnecessary election when only one candidate is running, the bylaws were changed to accept the nominating committee report as an election of that candidate.

Therefore, since the 2022 election has only one candidate for each director seat, you will not receive a mail ballot in 2022. However, to accommodate member approval of last year's minutes and the cooperative's financial statements, we are providing an expanded electronic 'ballot'.

---

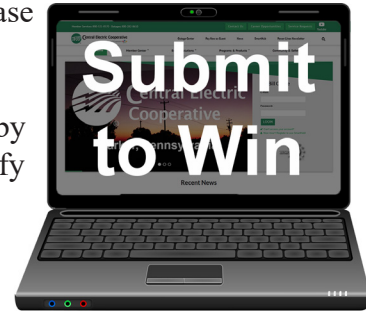
---

**The ballots will be available on our website from July 1 to Aug. 18 at 3 p.m. EST. Plus! If you submit a ballot, you will be entered into a drawing for a chance to win an \$85 bill credit or a \$850 Visa gift card! CEC will give away twenty \$85 bill credits and one \$850 Visa gift card.**

---

---

To submit a ballot, please visit [www.central.coop/2022ballot](http://www.central.coop/2022ballot). If you do not have access to the internet, please contact us to make alternative arrangements. Ballots must be received by Aug. 18 at 3 p.m. to qualify for prizes.



The results from this ballot will be announced at the nonpublic, annual business meeting on Aug. 19 at 6:30 p.m. at CEC's office in Parker.

Additionally, if you have any questions you'd like addressed at the annual business meeting, please share them by either completing the form below or visiting CEC's website.

It is out of an abundance of caution, that we have again decided to hold the annual business meeting without the physical presence of the membership and are accommodating members' participation through the expanded ballot. After the meeting, the results will be posted to our website. A recording of the meeting will also be available for members to view.

For additional information, please visit the annual meeting page of CEC's website.

### Submit a Question to be Addressed at the Nonpublic, Annual Business Meeting

Name: \_\_\_\_\_

CEC Account Number: \_\_\_\_\_

Email: \_\_\_\_\_

Question: \_\_\_\_\_

If you need more space, please submit through [www.central.coop](http://www.central.coop) or include additional sheets.

## Recipe of the Month

### Easy Rhubarb Sauce

**Ingredients:**

- 2/3 cup sugar
- 1/4 cup water
- 3 cups rhubarb, chopped

**Directions:**

Bring water and sugar to a boil in a small sauce pan. Add chopped rhubarb. Reduce heat, cover pan and simmer for five minutes, or until rhubarb is tender. Let sauce cool then serve over ice cream or cottage cheese.

*Thank you to Linda Knott for submitting this recipe!*

## Read Power Lines and Win!

Last Issue's Winner:

**Barb Schnur of Butler**

Last Issue's E-Winner:

**Wayne Kimbel of Harrisville**

Read Power Lines for a chance to win a \$25 credit on your monthly electric bill by completing and returning the quiz below. You can also have a chance at another \$25 bill credit by submitting a quiz online at [www.central.coop](http://www.central.coop).

If you don't have access to the internet, indicate that on the quiz and we'll also enter you in the online drawing. Just complete and enclose the quiz and personal information below and return it with your monthly payment.

**1. True or False:** Safety is the highest priority in CEC's mission statement.  
**Answer:** \_\_\_\_\_

**2. True or False:** Only use generators in an unventilated and wet area by air intakes to the house.  
**Answer:** \_\_\_\_\_

**3. True or False:** The cost of electricity has only increased 1% from 2015-2020.  
**Answer:** \_\_\_\_\_

**How are we doing?** (no wrong answer)  
 \_\_\_\_\_  
 \_\_\_\_\_

**Name:** \_\_\_\_\_

**Phone:** \_\_\_\_\_

**Acct. #:** \_\_\_\_\_

## CEC Management Team

Matthew P. Boshaw  
 CEO & General Manager

Chester Conti  
 Director of Finance and  
 Accounting/CFO

Christopher W. Kossman  
 Director of Information Technology

Stephanie Deal  
 Director of Human Resources

Fred E. Terwilliger  
 Assistant General Manager/COO

Lisa A. Hoover  
 Director of Member Services



Central Electric Cooperative

A Touchstone Energy® Cooperative

716 Route 368, P.O. Box 329, Parker, PA 16049

Newsletter Editor: Kessa Stydinger