

# PowerLines

YOUR CENTRAL ELECTRIC COOPERATIVE NEWS CONNECTION

**Central Electric  
Cooperative**

A Touchstone Energy<sup>®</sup>  
Cooperative



Photo by Cindy Baron of Sarver

## “WATTS” INSIDE

**3 2023 Good Neighbor  
Scholarship Winners**

**3 Student Selected for  
Youth Tour**

**4 Tick Safety**

**4 Employee Spotlight**

**5 2023 Annual Business  
Meeting**

**6 Refrigerators**

**6 How Electricity  
Reaches You**

**7 Energy Explorers**

**8 Rhubarb Bread  
Pudding Recipe**

## Unintended Consequences

**BY MATTHEW BOSHAW**  
CEO & General Manager

In previous articles, I have written about the impact of supply chain issues on the electric utility industry and Central Electric Cooperative (CEC) specifically. While no one has experience with the magnitude of supply chain issues created by the pandemic, our planning process includes contingencies for events of lesser magnitude that have impacted our supply chains in the past. Because of this, we were able to address material and equipment availability issues in several ways. We increased stocking levels, increased reorder points, identified additional sources, and extended the useful life of existing facilities and equipment proactively. Taking these steps allowed us to have enough materials and equipment to quickly restore interruptions to our service during back-to-back early spring storms.

Unfortunately, not all decision-making processes give the same level of consideration to the entire picture or the potential unintended consequences they may have. The Department of Energy has

recently proposed a required change in the manufacture of transformers used on the distribution electric system.

Currently, these transformers use a regular grain-oriented steel product in their core and the new standard would require this to be replaced with amorphous steel. The intent is to increase operational efficiency.

On its surface this is a laudable goal, but after further consideration, a number of significant concerns arise. First among these concerns is the negative impact this change would have on an already stressed supply chain, as mentioned. Transformer supply is essential to the maintenance and growth of electricity supply. The supply of transformers was dramatically impacted by the pandemic and has been slow to respond. The addition of another source of transformers would be welcome, but this change would eliminate the current production capacity. Additionally, there is less capacity available to produce this steel product, it has limited applications, and is very costly. Its limited uses and high cost will not create an environment conducive to increased production.

Further exacerbating the concerns are

*Continued on page 2*

the increased costs. In a time of economic uncertainty and significant inflation, adding significant costs to the supply of an essential service is counterintuitive. I would also be remiss if I didn't mention the direct economic impact this change would have on our specific area. Cleveland Cliffs is the only manufacturer of regular grain-oriented steel in the United States and is located in Butler County, PA. If this change is implemented, it would have a direct impact on this significant employer in our area.

There are those that would argue that improved efficiency can offset cost concerns and have a positive impact on the environment as well. A significant increase in efficiency may, in fact, offset the increased cost, but this change does not bring a significant improvement in operational efficiency. Power and distribution transformers already operate very efficiently and this change would offer only a marginal improvement in very specific conditions. In short, it would have a significant impact with little, if any, benefit.

I have focused previous articles on the need for a comprehensive energy policy in the United States because many initiatives are in direct opposition to each other when we do not have one. The most glaring example of this is the concurrent efforts to electrify the vehicle marketplace creating a need for significant increases in schedulable, baseload generation while simultaneously creating mandates that lead to the closure of schedulable, baseload generation facilities.

This most recent initiative follows the same model. Enact a mandate that will decrease the production of transformers and increase their cost at a time when the marketplace is experiencing a shortage of supply and increased inflationary costs. Clearly, these unintended consequences were not the goal of those creating policy, but it is equally clear that the scope of the impact was too narrow. I hope you will join CEC, our statewide association and our national association in expressing your concerns to our legislators on this critical infrastructure issue. As always, thank you for your membership.

## MANAGEMENT TEAM

**Matthew P. Boshaw**

*CEO & General Manager*

**Chester Conti**

*Director of Finance and Accounting/CFO*

**Lisa A. Hoover**

*Director of Member Services*

**Christopher W. Kossman**

*Director of Information Technology*

**Fred E. Terwilliger**

*Assistant General Manager/COO*



CEC's meters were changed several years ago to an Automated Meter Reading System, which automatically sends daily readings to CEC. With this technology, our Meter Servicemen do not regularly go to accounts to read meters. They do, however, occasionally do meter inspections to check for safety issues and accuracy.

Do not be alarmed if a CEC employee goes to your meter to conduct this inspection. All employees will be in a CEC vehicle and carry a CEC identification badge.

**Here are a few things you can do to help our employees do their jobs quickly and safely:**

- Make sure your meter is easily accessible and clear from debris.
- If possible, secure pets away from the meter. We love dogs, but not all dogs love people.
- Having a clear line of sight to the meter is important. If your meter is blocked from view, please move any equipment, wood piles or other items.

Vote for the top five photos in our photo contest at [www.central.coop](http://www.central.coop). Online only voting will take place from June 16 to July 28.

Members without internet will be able to vote through the September issue of this newsletter.



**Central Electric Cooperative**

A Touchstone Energy® Cooperative

## BEAT THE PEAK!

When you hear it's a peak day, reduce electric use to keep demand and prices low.

**Raise your thermostat a few degrees to help conserve energy.**

**Do laundry and run the dishwasher in the morning or late evening.**

**Turn off unnecessary lights and electronics.**

**Shut blinds and curtains during the day to keep your house cool.**

Visit [www.central.coop](http://www.central.coop) for more information.

# 2023 Good Neighbor Scholarship Winners



**C**ongratulations to the 2023 recipients of the Good Neighbor Scholarship! CEC awarded 10 scholarships of \$2,500 to members (or members' children) who will further their education in 2023. For more information on this program, please visit [www.central.coop](http://www.central.coop).



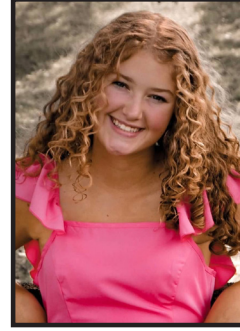
**Katelyn Bauer**  
North Clarion High School



**Ava Formaini**  
Armstrong High School



**Anna Gribik**  
Clarion Area High School



**Ryleigh Henry**  
Franklin Area High School



**Mackenzie Karnes**  
Cranberry Area High School



**Brooke Lassinger**  
Seton Hill University



**Shilo Lenhart**  
Keystone High School



**McKayla McGuire**  
Redbank Valley High School



**Ellabay Perry**  
Cranberry Area High School



**Natalie Ribar**  
Franklin Regional High School

## Student Selected for Youth Tour



**Lydia Scardina**

A local high school junior was selected to attend the 2023 Electric Cooperative Youth Tour in Washington, D.C.

Lydia Scardina, who attends PA Leadership Charter School, will join students from across the nation to see the U.S. Capitol, meet with legislatures, tour museums and monuments, visit the National Zoo and much more. She will also learn about electric cooperatives, U.S. government and history, and attend educational seminars.

To learn more about Youth Tour, visit [www.central.coop](http://www.central.coop). Applications for 2024 will open in November.



## CO-OP NEWS



### Stay Up to Date During Outages with Outage Notifications!

Receive outage updates directly to your phone with outage notifications! CEC members can receive live text or email outage updates if they sign up on SmartHub.



# Tick Safety

by Dylan Linke,  
Manager of Safety  
and Loss Control



As the weather improves, folks are spending more time enjoying the outdoors. However, along with enjoying the warmer weather, we need to be aware of the dangers posed by ticks.

Ticks are small arachnids that bite to fasten themselves onto skin and feed on blood. Ticks live in the fur and feathers of many birds and animals, as well as in damp, shaded areas of underbrush and vegetation in wooded areas.

There are several types of ticks in the United States, and they can be found in virtually any area of the country. Unfortunately, Western PA is popular for them, and this year is anticipated to be uncommonly bad for ticks. Tick bites occur most often during early spring to late summer, most often in the areas described above. It is important to try and avoid areas where ticks are found and prevent tick bites to avoid contracting the diseases they may carry. Several of the most common diseases ticks can carry include:

- Lyme’s Disease
- Rocky Mountain Spotted Fever
- Tularemia
- Relapsing Fever
- Colorado Tick Fever

Most of these diseases come with flu-like symptoms after getting bit. Symptoms may begin from one day

to three weeks after the tick bite. Sometimes a bullseye -shaped rash or sore area appears near the bite along with the flu-like symptoms. If you are bitten by a tick or display symptoms after being in an area where ticks are found, it is recommended that you seek medical attention immediately. Early diagnosis and antibiotics can result in a full recovery.

Avoid areas with a lot of vegetation or animals that can carry ticks. If you must be in these areas, wear clothes and gloves that cover as much skin as possible. Use bug repellent that protects against ticks. Check for ticks periodically on your clothes and on your skin. Do a complete check of your body before showering. Ticks like to burrow themselves into the skin in warmer areas of the body.

It is important to remove the tick as quickly as possible. Removing the tick quickly can prevent the spread of disease if the tick is infected. Use fine tip tweezers to remove the tick. Make sure the head of the tick is removed with the body. Save the tick in a zip lock bag or container in case it needs to be identified later if disease occurs. There are also several consumer-grade options to have the tick tested for diseases.

Wash the area and your hands with soap and water after removing the tick. Apply antibiotic ointment to the area if the bite becomes irritated. While many ticks do not carry disease, some do. Avoiding the areas where ticks are present is the best way to eliminate the chance of getting bit. It is important to protect yourself and prevent tick bites.

*Additional information, as sourced for this article, can be found at [lymetickbughub.com](http://lymetickbughub.com).*



**Role:** Training & Events Coordinator  
**Employee Since:** September 2020

## Employee Spotlight: Kayla Clark



**What do you do at CEC?** I coordinate trainings and organize internal events for all employees.



**What do you enjoy most about working at CEC?** Being able to assist in professional growth by planning and coordinating trainings.



**What is one thing on your bucket list?** To compete at the All American Quarter Horse Congress.



**What do you enjoy doing outside of work?** Showing horses, buggy riding, and pheasant hunting with my dog.



**Do you have any pets?** I have a dog (Large Munsterlander), 3 horses and a turtle.

You're invited to the  
**2023 CEC ANNUAL BUSINESS MEETING**

Thursday  
 August 10  
 2023

**Allegheny-Clarion Valley High School**  
 776 PA-58  
 Foxburg, PA 16036



**Exciting updates to CEC's Annual Meeting!**

*by Kessa Moore, Communication Specialist*

**T**hose who have been CEC members for several years probably remember attending at least one CEC Annual Meeting. As you know, CEC regrettably held virtual-only Annual Meetings for the past three years. During this time, CEC's Board of Directors and staff had many discussions about the Annual Meeting and how it can be improved.

One of the most significant changes to CEC's Annual Meeting is the separation between the Annual Business Meeting and Member Appreciation Event. The Member Appreciation Event will serve as a fun, educational, family-friendly event, while the Annual Business Meeting will exclusively serve as the traditional business meeting portion of the previous event layout.

One of the most beneficial outcomes of these changes will be that members will have an opportunity to meet board members and anyone running for the board before election time. The previous layout usually resulted in members only meeting prospective board members on election day.

Additionally, the in-person Annual Business Meeting will now take place on the second Thursday of August. This year, it will occur on August 10, 2023, at Allegheny-Clarion Valley High School in the gymnasium. This event will include election results, remarks from CEC's

CEO, a question-and-answer session, door prizes, and educational information. Doors will open at 5:00 p.m. and the business meeting will begin at 6:00 p.m. Light refreshments will be available. This will be a traditional business meeting and is not intended for children.

Another exciting change is where we will hold the Member Appreciation Event. The event will no longer take place at Whitehall Camp and Conference Center in Emlenton. In the summer of 2024, we will host a Member Appreciation Event at CEC's headquarters in Parker. This change will allow CEC to showcase more equipment and educational materials, as well as give members who haven't seen our headquarters a chance to see behind the scenes. We are excited to let members have a closer look at how we operate, as few members have had the opportunity to do so.

We are still working on the details for the Member Appreciation Event for 2024 and will share those as they become available. We thank those who participated in the 2022 Member Survey, as the results are instrumental in deciding what members would like to see at this event. We hope you are excited about these changes and we hope to see you on August 10 at Allegheny-Clarion Valley High School!

**Submit a Question to be Addressed at the Annual Business Meeting**

Name: \_\_\_\_\_

CEC Account Number: \_\_\_\_\_

Email: \_\_\_\_\_

Question: \_\_\_\_\_

If you need more space, please submit through [www.central.coop](http://www.central.coop) or include additional sheets.



# Refrigerators

by Connie Long, Member Energy Specialist

I don't know about you, but my refrigerator is something I definitely take for granted. We rarely think about them running until they stop working, then the panic sets in. How do I decide which one to buy? Is this one going to cause my electric usage to go up? What should I really consider when buying a new one? Let's go over some basics to start.

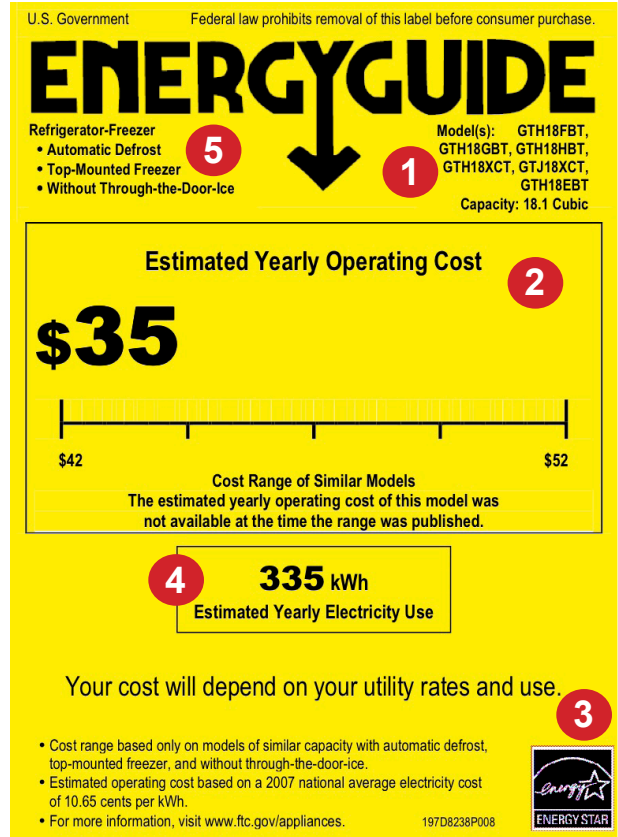
**Size:** It's always important to make sure you look for the right size to replace your old refrigerators.

**Number of doors:** The fewer the doors on the new appliance, the less of a chance of air leakage.

**Freezer location:** Refrigerators with the freezer on top typically use the least amount of energy.

**Energy Star rated:** this is fairly important, especially if you want to potentially receive a rebate.

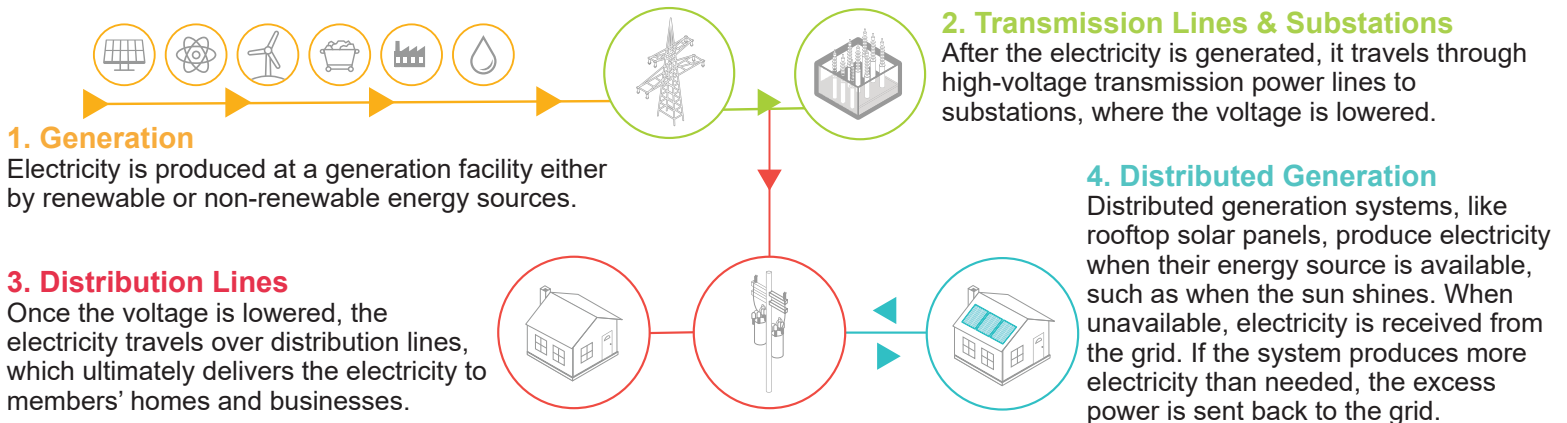
Next, let's talk about the EnergyGuide label. If you were like me at one point, this label always looked so confusing, which made the process even more stressful. However, let me tell you, they are really simple when you take the time to look! So, where does an EnergyGuide label come from? An EnergyGuide label is part of the Energy Star program, which is a widely known government program. The program encourages energy efficient products to help you save money and protect the environment. The guidelines for the program are set by the U.S. Environmental Protection Agency (EPA) and they determine if a product qualifies or not. They do the majority of the work for you to gather information to compare and find the best appliance for you. This label lets you know how much energy an appliance uses and compares it to similar models.



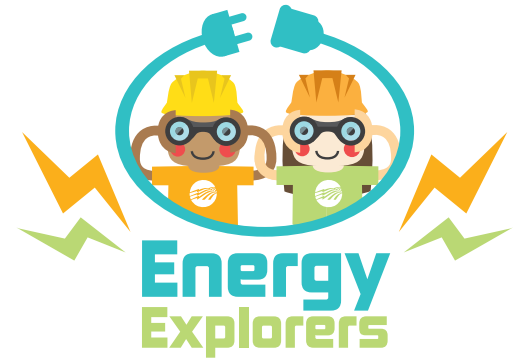
1. Make, model number, and size of the appliance.
2. Estimated yearly operating cost (based on national average cost of electricity), and the range of operating cost for similar models.
3. The Energy Star logo indicates that this model meets strict criteria for energy efficiency.
4. Estimated yearly consumption.
5. Key features of the appliance and similar models that make up the cost comparison range

So, if your refrigerator does stop working, there are many things to consider before purchasing a new one, and don't forget to look for our rebate! We are currently offering a \$50 rebate for Energy Star rated refrigerators purchased after May 1. Please call the office or check out our website to access the guidelines and application.

## HOW ELECTRICITY REACHES YOU



# SWIMMING POOL SAFETY WORD SEARCH



Water and electricity never mix. Always practice safety when you're near or in the swimming pool this summer. Read the following safety tips, then find and circle the **bolded** words in the puzzle below.

Never bring electrical **devices** near a swimming pool. **Electrical** devices that come in contact with **water** can cause electric shock.

When possible, use **battery**-operated devices when **outdoors** near a swimming pool.

Outdoor electrical **outlets** should be **dry** or covered.

If you hear thunder, immediately exit the swimming **pool**. Thunderstorms and lightning may be near.

C	Y	P	G	V	Q	B	X	S	E	D	R	N	L	Y
I	R	O	J	R	H	S	R	L	J	M	R	I	J	F
I	E	O	X	M	W	O	E	V	T	W	G	Y	L	A
M	T	L	T	J	O	C	M	H	O	H	M	H	K	H
V	T	P	A	D	T	M	C	K	T	Z	G	E	U	Q
E	A	Y	T	R	P	O	Z	N	E	J	K	Y	M	B
H	B	U	I	P	T	E	I	D	Q	K	C	X	Q	M
Z	O	C	L	F	W	N	W	W	C	N	K	J	N	S
R	A	I	T	B	G	G	S	D	R	T	H	T	I	K
L	E	I	T	K	J	K	N	H	X	Z	C	B	Y	J
L	K	T	A	Z	X	T	Y	H	E	Q	D	P	R	R
N	X	M	A	X	M	Q	S	E	C	I	V	E	D	F
Z	O	Y	D	W	O	U	T	L	E	T	S	U	V	L
X	N	P	Y	C	Y	O	H	O	P	J	L	R	C	Q
Z	M	J	Y	L	X	R	L	B	E	N	B	H	C	K

