

## CEC Quick Facts

- We strongly believe in educating our members on the dangers involved with electrical equipment.
- Our educational programs are designed for members of all ages.
- We offer a high-voltage demonstration, safety city tabletop demonstration, first responders' training and a career day program with our linemen.
- All programs are available by request throughout the year.
- All programs are offered at requested locations, except for the high-voltage demonstration which is only available at our headquarters in Parker.
- To request more information about our educational programs call 800-521-0570 or visit our website at [www.central.coop](http://www.central.coop).

## Contact Us

716 Route 368 • P.O. Box 329  
Parker, PA 16049-0329

800-521-0570

[www.central.coop](http://www.central.coop)

Business Hours:

Monday - Friday

8:00 a.m. - 4:30 p.m.




**Central Electric  
Cooperative**

A Touchstone Energy® Cooperative 

## Educational Safety Programs



**Central Electric Cooperative**

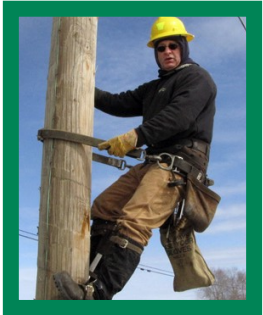
A Touchstone Energy® Cooperative 



[www.central.coop](http://www.central.coop)

## Educational Programs

Central Electric Cooperative (CEC) understands the importance of teaching electrical safety. Our hope is to demonstrate to everyone electrical dangers you might be exposed to by offering a variety of FREE, safety demonstrations for adults and youth. We offer a variety of programs. The Safety City Demonstration, a high-voltage demonstration, a First Responders' Electrical Hazards Training and our very own linemen career day. Our programs cover the importance of electrical safety and are available to all members. Programs may be presented off site, except for the high-voltage demonstration which is only offered at our headquarters in Parker.



### Safety City Demonstration

Our Safety City Demonstration is a presentation designed for fourth and fifth grade students. It is approximately 40 minutes long and teaches students about the potential dangers of electricity. Due to the size of the display, smaller groups of five to 30 provide a more hands-on experience.



### High-Voltage Demonstration

Our live, high-voltage demonstration takes place at our headquarters in Parker and is performed by our linemen. It's approximately 30 minutes long. A kite string, tree branch and piece of sausage are just a few of the items used to demonstrate the dangers of electricity.

## Career Day Programs

CEC's linemen offer a career day for students of all ages. The program is a great way for kids to learn a lineman's daily job duties. The presentation is hands-on and students have the opportunity to see many tools the linemen use and the safety equipment they wear. Weather permitting, the students also have a chance to see a bucket truck up close and watch a lineman climb a pole.

### First Responders' Electrical Hazards Training

First responders know emergencies can involve electric lines and equipment. They also know it is likely they will be the first on the scene. This program is designed to help them identify and handle situations involving electrical equipment, and stay safe. This program is held on a reoccurring basis at our headquarters or can be brought to your location.

**If you would like more information about any of these programs, or to schedule one, please call 800-521-0570.**