

PowerLines

YOUR CENTRAL ELECTRIC COOPERATIVE NEWS CONNECTION

Central Electric Cooperative

A Touchstone Energy[®]
Cooperative



“WATTS” INSIDE

- 3 Photo Contest Voting
- 4 Outage Safety
- 4 Employee Spotlight
- 5 Blinks: Keeping You in Power
- 6 Outages & Energy Efficiency
- 7 Energy Explorers
- 8 Salmon Patties Recipe

The Model

BY **MATTHEW BOSHAW**
CEO & General Manager

In case you haven't heard, there will be a Presidential election in November of this year. We are in one of the most divisive political environments that I have ever seen as evidenced by an assassination attempt on a candidate in our own backyard and a subsequent withdrawal of another. Throughout those events, there has been a consistent call for unity on both sides of the political spectrum. Sadly, the definition of unity in this case appears to be more along the lines of “We need to be unified so you need to agree with me.” Far too often when asked why I should vote for one or the other candidate, the response “because I am not the other guy” is given.

The President and CEO of our statewide association, Steve Brame, recently gave a speech in which he shared a picture of former political rivals President Ronald Reagan and Speaker of the House Tip O'Neill. He shared this picture as an example of what can be accomplished - by even the most extreme rivals - and as a metaphor for how the cooperative business model and

the well-being of our member-owners could serve as the bridge to create actual unity. These political party leaders could not have been further apart on the political spectrum, yet they were able to work through their differences for the good of the American people and come to agreement on a plethora of significant issues. Beyond that, statesmen like political success. The unlikely two were able to become and remain good friends outside the political arena and often shared a meal, a drink, and good fellowship after a day of heated battle.

The cooperative business model can certainly serve as a similar example regarding how people with different ideas and beliefs can come together to reach the common goal of providing an essential service to all. Further, the well-being of cooperative member-owners can, and perhaps should, serve as an example of an issue that can be agreed upon no matter your political persuasion. I am not suggesting that the needs of the cooperatives will bring all the parties together to hold hands and sing kumbaya, but I believe cooperative issues are those that can be agreed to by either party.

Providing safe, affordable, reliable electricity is the primary focus of every

Continued on page 2

electric cooperative across the country. As electricity has progressed from a luxury to an essential service, electric service has a direct impact on the quality of life of all that use it. Those two facts are the bridge that can turn politicians into statesman even if they agree on little else. Creating or voting for legislation that supports the cooperatives' ability to serve our members is a win for everyone. No elected official can argue against maintaining the infrastructure that supplies electricity. Even if a politician doesn't actually care about their constituencies well-being (I should be clear I am not suggesting any such politician exists), supporting cooperative issues will earn them votes from both sides of the aisle, allowing them to maintain their position.

With all of this in mind, the cooperatives could offer the model that leads us down the path to actual unity. It has always been my belief that we agree on far more than we disagree but our time is always spent on the things on which we disagree. As the election gets to its fevered pitch, remember we are all part of the cooperative. We should remind our elected officials of the same and ask them to recognize that electric service cannot be a political game because the loss of this service is a loss for us all. This industry is filled with evolving technologies and challenges, but it has always been. When we have worked together to address these challenges we have been remarkably successful in electrifying the country and improving the quality of life for all Americans. Perhaps reminding them of our successes and the catastrophe that would result from a grid failure is the best illustration of the need to come together. It would at the very least get us closer to the accomplishments of President Reagan and Speaker O'Neill and maybe we could share that meal, drink and fellowship after the battle.

You can utilize Co-Ops Vote (vote.coop), Voices for Cooperative Power (www.voicesforcooperativepower.com), or America's Electric Cooperatives PAC to get information or reach out to our elected officials. Additionally, your cooperative is a resource for information and getting you connected. We can start to bring our elected officials together, build consensus, and hopefully start to unify us all behind the well-being of cooperative members.

MANAGEMENT TEAM

Matthew P. Boshaw

CEO & General Manager

Chester Conti

Director of Finance and Accounting/CFO

Lisa A. Hoover

Director of Member Services

Christopher W. Kossman

Director of Information Technology

Fred E. Terwilliger

Assistant General Manager/COO

www.central.coop



Energy Assistance For Members

Family Fund assists families or individuals in need who have their permanent residence on CEC lines. Funds come from unclaimed capital credits and donations from our Round Up Program.

Learn more about the program and qualifications on our website.

BLINKS: KEEPING YOU IN POWER

A short blink allows temporary faults to clear on our system avoiding extended power outages for our members.

DID YOU KNOW

- Blinks are intentional and built into the CEC distribution system.
- Blinks keep as many people in power as possible.
- Blinks protect the system from hazards such as fire and damages from animals and trees.
- CEC collects data from blinks to complete preventative maintenance and to make system improvements.

LEARN MORE

800-521-0570
www.central.coop
 716 Route 368, Parker, PA 16049

Central Electric Cooperative

Photo Contest Voting

After 34 members submitted photos for our 2024 Photo Contest, 1,282 online votes has narrowed it down to five photos. Please vote from the photos below for the **three** you feel deserve to be our winners and mail your form to our office. **You can also vote on our website until Oct. 18.** The photo with the most votes will receive the first place prize of a \$100 bill credit, second place a \$50 bill credit, and third a \$25 bill credit. We will announce the winners in late October and in December's Power Lines newsletter. Thank you to all who entered photos!



**Photo #1:
Hovering Hummingbird**



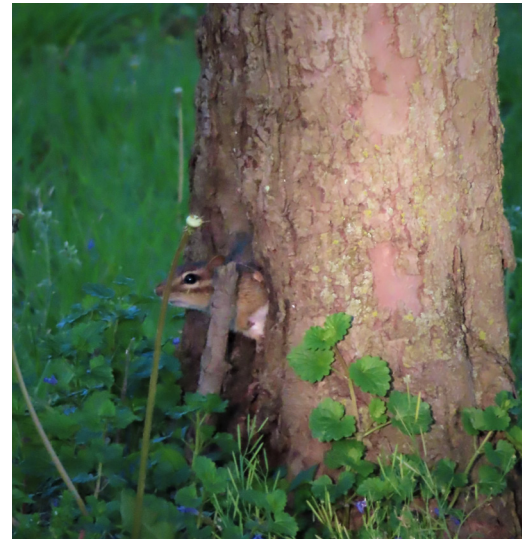
**Photo #2:
Peek-A-Boo**



**Photo #3:
Foggy Morning on the Farm**



**Photo #4:
True Love**



**Photo #5:
Who Goes There!?**

Photo Contest Voting Form

Name: _____

Address: _____

Please check the boxes for the three photos you wish to vote for.

Photo #1

Photo #2

Photo #3

Photo #4

Photo #5

Return this coupon to CEC by Oct. 18, 2024.



Outage Safety

by Kayla Clark, Training and Events Specialist

Power outages, whether planned or not, can disrupt your day. When an outage occurs, the employees at CEC work hard to restore power, but many factors can affect restoration times. Being prepared in the event of an outage will help your family stay safe during an outage.

A simple step to prepare for an outage is to assemble an outage kit. This kit should include: flashlight and batteries, first aid kit, non-perishable food and manual can opener, bottled drinking water, battery powered radio and emergency lights, battery charging banks, and other items that would assist with your family's needs. While candles can provide light, they are unsafe as they are a fire hazard. Several flashlights, battery powered lanterns, and extra batteries are essential to have on hand. Refrigerators and freezers will remain cold for a while, but not forever. Try to refrain from opening them and throw away any food that reaches 40 degrees F. Having a backup cooking source such as an outdoor propane grille is an easy way to cook during an outage. Be sure to keep your smoke alarms and carbon monoxide detectors up to date with new batteries. If you have an automatic garage door opener, learn how to use the manual opener prior to an outage.

If you or someone in your household takes medication that requires refrigeration or uses a

medical device that is powered by electricity, be sure to have a backup plan. Consider keeping a battery powered mini refrigerator and backup portable batteries suitable for your medical equipment in your outage kit. Surge protection can help protect your appliances and electronics when the power comes back on. You can also unplug any of these units to prevent a surge.

When an outage occurs, you should always contact us to verify we are aware of your outage. Be sure to stay away from any downed power lines and flooded areas. Eliminate unnecessary travel in case of road closures. If using a generator, be sure to have it placed in a dry, well-ventilated area. Preparing for an outage ahead of time will make it a stress-free event!

YOUR POWER OUTAGE PANTRY

We do our best to avoid power outages, but unfortunately, Mother Nature occasionally has different plans. Stay ahead of the storm by stocking your pantry with a variety of non-perishable items.

Set these items aside for extended outages only, and your storm prep will be a breeze!

- BEANS
- CANNED FRUIT
- CANNED TUNA
- CANNED VEGETABLES
- CEREAL
- DRIED FRUITS
- DRIED MEATS/JERKY
- GRAHAM CRACKERS
- PASTA
- RICE
- SPAM
- OATMEAL



Don't forget to stock up on disposable goods, like paper plates, napkins, plastic cutlery and cups.



Role: Supervisor of Member Services

Employee Since: July 2010

Employee Spotlight: Laura Prosser



What do you do at CEC? I am a supervisor in the member services department. My group handles billings, payments, service requests, and the call center for the co-op.



What is something you are most proud of? Being a new mommy to a sweet, silly little girl.



What is your favorite family tradition? Family has looked different for me over the years, but some of my fondest memories involve simple Sunday family dinners.



What's the best trip you've ever been on and why? I went to Kauai for my honeymoon. The island has amazing views, beautiful beaches, and the weather was perfect!

BLINKS: KEEPING YOU IN POWER

Central Electric Cooperative (CEC) understands the disruption power outages cause our members. That is why CEC takes preventative measures to keep outages to a minimum. This work includes clearing and spraying rights-of-way to minimize trees contacting lines, installing wildlife wire and guards to reduce outages caused by animals coming in contact with our lines, and installing protective devices on the system to make sure equipment isn't damaged and to keep the number of members out of power and the duration of outages to a minimum.

While not often considered intentional, blinks are caused by the devices mentioned above operating due to a fault condition. In short, a fault is the creation of an unintentional connection or path between two phase wires or a phase wire(s) and ground. The faults result in more current than our system would normally have, so the protective devices interrupt power to prevent permanent damage to the system and damage to anything near or downline from the fault. These devices allow for a temporary condition to clear itself and automatically restore power a certain number of times before locking open; this interruption of power is what we refer to as a blink. A transient condition can be an animal or tree limb falling on the line that can clear on its own. Essentially, this process is in place to keep as many members in power as possible. Without blinks extended outages could occur for

transient conditions, but because blinks are built into the system, CEC avoids extended outages in exchange for short interruptions in power.

Blinks not only help protect our distribution system, reduce extended outages, and protect items in your home connected to the system, but also help CEC diagnose problems. Blink data collected from CEC's metering system is used in preventative maintenance plans and system improvement plans. Most recently, CEC used blink data to identify a transformer that needed to be replaced prior to it failing and causing an outage.

CEC understands blinks may not be a favorable occurrence for our members, but blinks are in place to keep your lights on. So, the next time you experience a blink, remember a short blink allows temporary faults to clear on our system, avoiding an extended power outage for our members.

For more information on blinks, read or revisit an article published in the March 2024 issue of Power Lines at www.central.coop.



by Nikki Staley, Communication Supervisor



Outages & Energy Efficiency

by Connie Long, Member Energy Specialist

When the power goes out, it can be a real inconvenience. And, after a major storm we can have extended power outages, which isn't fun. It is still important to be mindful of your electric usage for when power is restored. Always remember that CEC wants to get your power back on as soon as possible, but sometimes the outages are widespread and take time. Remember to use proper generator safety to protect yourself, neighbors and our linemen during outages.

There are some easy ways to stay energy efficient during and after outages. Start by doing a walkthrough of your home and make sure all unnecessary lights, electronics and appliances are off or unplugged if

possible. This helps to prevent an overload when the power is restored and keeps "phantom energy" use to a minimum. It can also help to prevent items from being harmed if there is an unexpected surge that, unfortunately, can happen. CEC provides surge protection options; check out our website for more information on whole home surge protection.

After an extended outage, you'll want to check your fridge and freezer, the food should remain good as long as you keep the doors shut. Did you know that a full freezer will keep the correct temperature for approximately 48 hours and 24 hours if it's half full? If your outage last longer, you could purchase bags of ice and place them inside your fridge or freezer to keep your items cold. This will help prevent your appliances from running harder to get back to the correct temperature when power is restored.

As I wrap up this month's article, keep in mind, even though there may be a power outage it is still smart to think about energy efficiency for when the linemen restore your power.

IMPACTS OF THE EPA'S POWER PLANT RULE

The Environmental Protection Agency's (EPA) power plant rule threatens access to reliable electricity for millions of Americans. The EPA's power plant rule will:



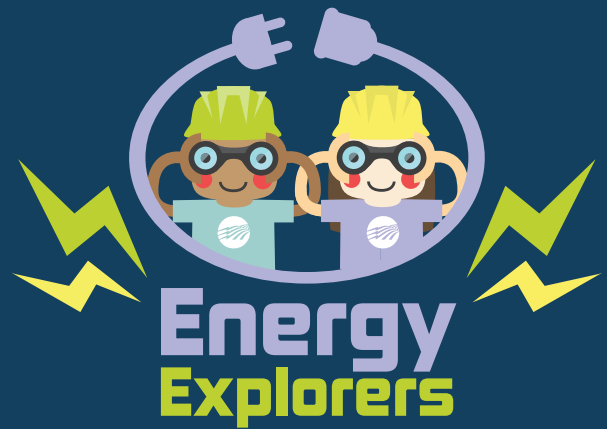
- 1 Force the premature closure of many power plants that currently provide electricity 24/7.
- 2 Mandate the deployment of unproven carbon capture and storage technology.
- 3 Jeopardize the reliability of the grid at a time when America is already facing a surge in electricity demand.
- 4 Heighten the risk of rolling power outages to relieve pressure on the electric grid.
- 5 Increase costs for consumers as utilities are forced to pay for new power generation to comply with the EPA rule.

PREPAREDNESS MONTH WORD SEARCH

Did you know September is National Preparedness Month? There are several ways you and your family can be prepared for an emergency.

Read the tips below, then find and circle the bolded words in the puzzle.

(Use the word bank as a guide.)



PREPAREDNESS TIPS:

Keep a list of emergency **phone numbers** in a location that's easy to find.

Learn about different types of **emergency alerts** and understand what they mean.

Make an emergency **kit** that includes items like flashlights, batteries, water, non-perishable food and a First Aid Kit.

Designate a **safe area** in your home in the event of severe storm. This should be an area in the center of the home, away from windows.

Make sure **smoke alarms** are installed on every floor of your home and outside bedrooms. Test alarms every month to ensure they're working properly.



WORD BANK: phone numbers, emergency, alerts, kit, safe area, smoke alarms



From the Kitchen of:
Ken Maleski

RECIPE: **SALMON PATTIES**



INGREDIENTS:

16-ounce can salmon	1 teaspoon black pepper
1 egg, beaten	1 tablespoon Old Bay
Small onion, diced	1 teaspoon garlic powder
1/2 cup of flour	3 tablespoons cooking oil
3 tablespoons lemon juice	
1 teaspoon salt	

INSTRUCTIONS:

In a large mixing bowl, mince salmon with a fork to break the fish into small pieces. Add beaten egg mixture and all other ingredients. Form mixture into small patties (3 to 4 inches in diameter). Fry in skillet with hot cooking oil for 4 minutes per side. Tastes great with cocktail sauce. Makes 4 patties.



**ON THE GO AND
IN CONTROL.**

MANAGE

your account

REPORT

service issues

VIEW AND PAY

your bill

RECEIVE

key notices

MONITOR

usage 24/7

*...all in the palm of your
hand and online.*



Central Electric Cooperative

A Touchstone Energy* Cooperative

Your Board of Directors



From left (back row): Robert Smith, Vice President, Butler County; Jody Weaver, Clarion County; **(middle)** Ken Durrett, Butler County; Rick Weaver, Clarion County; John Campbell, Forest County; **(front)** Nancy Lendyak, President, Armstrong County; Ken Etzel, Venango County; and Althea Smith, Secretary/Treasurer, Venango County.

 central.coop/meet-your-directors

MISSION: CEC safely provides reliable and competitively priced electricity to our consumer-members and was established by and is committed to the communities we serve.

716 Route 368, P.O. Box 329, Parker PA 16049
Member Services: 800-521-0570; Outages: 800-282-8610
www.central.coop

Newsletter Editor: Nikki Staley

This institution is an equal opportunity provider and employer.



Missed an issue?

Catch up at www.central.coop

Read past issues of Power Lines and stay up to date on CEC news.

