

Inside:

Enter Our Holiday
Coloring Contest!

Be Prepared
for an Ice Storm

“Watts” Inside

An End to 2020	2
Smart Power Strips	3
Photo Contest Winners	3
Ice Storm Preparedness	4
Holiday Coloring Contest	5
Foolproof Chocolate Fudge Recipe	6

Board of Directors

Nancy Lendyak
President

Kenneth Etzel
Vice President

Althea Smith
Secretary/Treasurer

Kenneth Durrett
Robert Smith
Jody Weaver
Richard Weaver

PowerLines

May you and your loved ones be blessed
with unlimited moments of joy and love.
Merry Christmas & Happy New Year.



An End to 2020

by Matthew Boshaw, CEO & General Manager

Each year I look forward to December. I was born in the month and, of course, it hosts a wonderful holiday celebration for most religions. Plus, everyone is still excited when the snow falls because they are not yet tired of winter and it seems everyone is just a little nicer to one another.

This year has added incentive to be happy about December. It marks the last month of the ridiculous year that has been 2020. I have never been happier to see a year come to an end. A global pandemic, unprecedented social unrest, and perhaps the most contentious election season our country has ever seen — have left me ready to start fresh in 2021. I am writing this article at the end of October because of printing schedules, so let me just include a hope that the pandemic is waning, your candidate won, and we are all getting along. While 2020 fatigue has provided me a negative reason for looking forward to December, in another way, it has provided me with a lot to appreciate.

The unprecedented conditions 2020 brought, illustrated to me what it truly means to be working in an essential industry. In describing my work to others, I often refer to our business as important or essential. I am quick to say that we aren't saving lives like healthcare workers, fire fighters, and law enforcement, but the service we provide has become completely integrated into American life. That has never been more evident

to me than during the pandemic. Maintaining a safe, healthy, and available workforce so we could ensure continuity of this essential service has been of paramount importance. As we were asked to stay home and limit our contact with others, electric service became more and more important.

2020 reinforced what I have always assumed of our members, board, and employees. We demonstrated flexibility and resilience in responding to a constantly changing set of conditions. We were required to quickly create a virtual office space that would support our essential service functions, while guarding the health and welfare of our members and employees. We adjusted our plans and efforts on the fly and the results have been great. In every case, we have focused on what is most important — to serve our members.

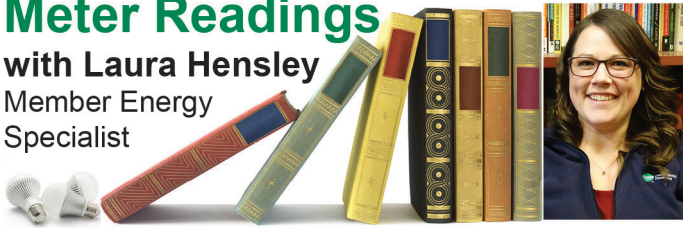
So, while I will be happy to see the end of 2020 — I am happy to see December arrive. I am proud of the efforts of our employees and thankful for the support of our members and board. Let me wish you all a Merry Christmas (or whatever celebration is yours) from your cooperative. On behalf of all of us here at Central Electric Cooperative (CEC), have a happy, healthy, and blessed holiday season! Thank you all!



Meter Readings

with Laura Hensley

Member Energy
Specialist



Power strips are a common feature in our homes as our plug-in load continues to grow. Surge protection is an added benefit to many power strips on the market, but are you aware some power strips can do even more for you? Smart, or advanced, power strips can offer other benefits, like energy-savings along with added convenience and safety for your home.

Investing in a smart power strip for your home office or home entertainment area is an easy, energy-saving option. Smart power strips help to eliminate phantom loads and allow you to save energy when connected devices are not in use.

The most common smart power strip utilizes a control unit, such a television or computer, plugged into a master outlet. The smart power strip detects when the control unit is off (or in stand-by mode) and shuts off power to peripherals, like cable boxes and printers. An example would be a home

Smart Power Strips

entertainment area in your family room. The television would be the control unit plugged into the master outlet, while a cable box, game system, and DVD player are plugged into the other outlets. When the television is powered off, all the other items are switched off as well — to stop them from using electricity. All of the items are then easily powered back on when you flip on the television.

Some other smart power strips have Wi-Fi connectivity and allow you to control them from a cell phone. This kind of connectivity allows you to create timers for lighting and turn devices on and off from anywhere. Another smart power strip offers a motion detector, so if a room is unoccupied for a set length of time the strip turns off power to connected devices — saving you energy. In addition to saving electricity, these features can provide safety and convenience for your home.

Try a smart power strip for holiday lighting this season and if Santa brings you some new electronics this year, consider a smart power strip with surge protection to protect those devices and save energy throughout the year.

CEC's Photo Contest Winners

Thank you to everyone who participated in our 2020 Photo Contest! We started with 56 entries, and with the help of all of your votes, the three winning photos were chosen. Watch for information on our 2021 Photo Contest in your spring Power Lines newsletters, or on our website.



First Place: Monarchs on Marigolds,
taken by Kate Stover of Valenica



Second Place: Bear-y Picking Trio,
taken by Kathy Palla of Chicora



Third Place: Pocketful of Gold,
taken by Jody Shawley of Shippenville



The Safety Linke



Don't be a stranger, to electrical danger.

Ice Storm Preparedness



Manager of Safety
& Loss Control

Dylan Linke

We have all experienced an ice storm where ice coats streets, sidewalks, power lines, and more. It makes transportation extremely hazardous and can cause power outages to a large area, occasionally for days and even weeks. These widespread power outages are caused when trees and power lines break and fall, sometimes crushing or electrocuting people in their way.

The following will help you get prepared for if an ice storm were to affect your area. But remember, it's important to prepare before the storm happens — not once it has already begun.

How would you heat your home if the electricity went out? People die during winter storms when they try to use outdoor fuel-burning equipment indoors. The carbon monoxide created by burning fuel builds up in poorly-ventilated areas and can kill occupants without warning. You should only use a heating device designed for indoor use indoors. You can keep your home warmer by closing off rooms you don't need and huddling in the warmest room with blankets and coats.

What about light? Houses go up in flames during winter storms because of candles. Instead, make sure you have battery-operated lights, such as

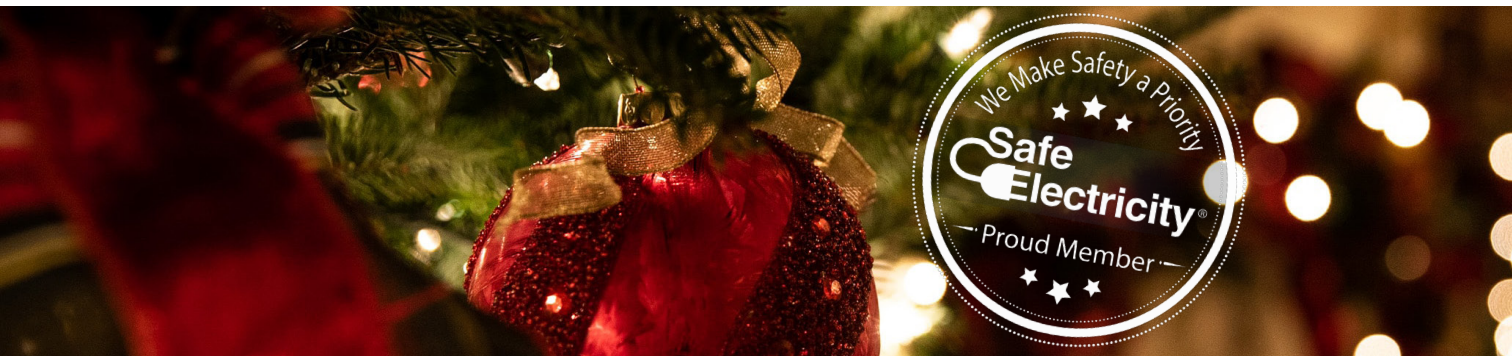
flashlights, and a good supply of batteries.

How about communication? Without electricity, your television, radio, and computer are rendered useless. Keep a battery-operated radio in your home for emergencies. Also, ensure your cell phone is charged to the best of your abilities and have an external charging mechanism ready to go.

A supply of clean drinking water and foods that can be eaten without cooking are important survival supplies in any season. Be mindful to other special needs, such as medicines, and ensure you have enough on hand. Pay attention to neighbors as weather extremes are hardest on the old, the young, and those in poor health.

Winter storms also claim lives when people are trying to work in extraordinary circumstances. Shovelling snow or doing other heavy work in the cold weather can cause heart attacks for those in poor health or unaccustomed to such work. Operating chain saws during disaster clean-up has also proven fatal for persons without experience with these dangerous tools.

All of these tips can help you be prepared for severe weather this winter. Just make sure you prepare now, and not once it has already begun.



Our Holiday Coloring Contest is Back!

Hey kids! Enter our Holiday Coloring Contest for a chance to win a prize! Deadline is Jan. 15, 2021. The contest is open to CEC members' children and grandchildren ages 5-12. The following groups will be judged together: ages 5-7, 8-10, and 11-12. CEC employees' children and grandchildren are ineligible. Mail entry to: Central Electric Cooperative, Attn: Holiday Coloring Contest, P.O. Box 329, Parker, PA 16049.



Child's Name: _____ Age: _____ CEC Account: _____

Member's Name: _____ Phone: _____

Recipe of the Month

Foolproof Chocolate Fudge

Ingredients:

- 18-ounces milk chocolate chips
- One 14-ounce can condensed milk
- 1-1/2 teaspoons vanilla extract
- Dash of salt
- Optional: 1/2 cup chopped nuts

Directions:

In a heavy saucepan, over low heat, melt chocolate chips with condensed milk. Remove from heat. Stir in remaining ingredients. Spread evenly into a wax-paper lined, 8-inch square pan. Chill 2-3 hours. Turn fudge onto cutting board. Peel off wax paper and cut into squares. Store loosely covered at room temperature.

*Thank you to Velma Stewart
for submitting this recipe!*

CEC Management Team

Matthew P. Boshaw
CEO & General Manager

Chester Conti
Director of Finance and
Accounting/CFO

Christopher W. Kossman
Director of Information Technology

Stephanie Deal
Director of Human Resources

Fred E. Terwilliger
Assistant General Manager/COO

Lisa A. Hoover
Director of Member Services

Read Power Lines and Win!

Last Issue's Winner:

Kelly Groce of Marble

Last Issue's E-Winner:

Hunter Bullers of Lucinda

Read Power Lines for a chance to win a \$25 credit on your monthly electric bill by completing and returning the quiz below. You can also have a chance at another \$25 bill credit by submitting a quiz online at www.central.coop.

If you don't have access to the Internet, indicate that on the quiz and we'll also enter you in the online drawing. Just complete and enclose the quiz and personal information below and return it with your monthly payment.

1. True or False: Smart power strips help to eliminate phantom loads and allow you to save energy when connected devices are not in use.
Answer: _____

2. True or False: 60 members entered our 2020 Photo Contest.
Answer: _____

3. True or False: It is okay to use outdoor fuel-burning equipment for heat indoors.
Answer: _____

How are we doing? (no wrong answer)

Name: _____

Phone: _____

Acct. #: _____



Central Electric Cooperative

A Touchstone Energy® Cooperative

716 Route 368, P.O. Box 329, Parker, PA 16049

Newsletter Editor: Renee Tritten