

**Inside:**

Are You Interested  
in Running for a  
Director's Seat?

**“Watts” Inside**

Washers & Dryers	3
Electric Supplemental Heat Sources	4
Are you interested in a director's seat?	5
Crispy Onion Chicken Recipe	6

**Board of Directors**

Nancy Lendyak  
*President*

Kenneth Etzel  
*Vice President*

Althea Smith  
*Secretary/Treasurer*

Kenneth Durrett  
Robert Smith  
Jody Weaver  
Richard Weaver



# PowerLines

Photo from Unsplash

**A Light at the End**

by Matthew Boshaw, CEO & General Manager

Like most of you, I am fatigued by all things COVID-19. I have tried to discuss other things in recent articles so as not to add to the stress. These have been strange days. I took a long weekend recently and found the best part of it was that, because I didn't go anywhere, I didn't have to wear a mask for four straight days. It's the little things, I guess.

I wanted to provide you an update of the protocols and procedures that Central Electric Cooperative (CEC) is following as we get started in 2021. As 2020 ended — thank goodness — I shared our plans with our employee group so they knew what to expect.

You have likely been hearing good news about the availability of multiple vaccines. Two vaccines have already been approved and distribution has begun. A third vaccine is on the cusp of approval

as well. On CEC's behalf, our statewide association has been in communication with the administration in the commonwealth to clarify where our employees fall in the line of those who are eligible to receive the vaccine. Because we provide an essential service, our employees will be eligible following the critical group of healthcare workers, high risk patients, and first responders. While this is good news, we have not been given a timeline for the completion of the initial group and when we may expect the vaccine to be available to us.

I have been actively tracking new COVID-19 cases and deaths in our service territory since the end of May. The bad news is that since the beginning of November the case and death rates in our service territory, and the state, have been by far the worst since the beginning of the pandemic. On the brighter side,

**A Light ... /Page 2**

# Power Lines

## *A Light ... /From Page 1*

the past week has shown a slight decline in both rates. The numbers are still high but if this trend continues, it is a hopeful sign. This information regarding a slight improvement is based upon numbers at the very end of December and beginning of January. It should be noted that health experts have expressed a concern about another spike that could happen due to holiday gatherings.

“There does appear to be a light at the end of this pandemic tunnel, but it is important to note that we are still in the tunnel.”

Matt Boshaw, CEO &  
General Manager

In an effort to mitigate the overwhelming of the hospital system, the state put in place additional restrictions beginning Dec. 12 and continuing through Jan. 4. At the time I am writing this, we do not know if the restrictions were to be extended. These additional restrictions led CEC to increase our efforts to limit in person contact with fellow employees and the public. We did this by continuing our efforts of platooning operations personnel, mandatory mask wearing, social distancing, offices closed to the public, and limiting in person meetings. We also increased the number of employees working from home as their positions allow. These efforts, coupled with increased vacation days taken at this time of year, have proven effective in limiting our number of positive cases and the resulting quarantining of close contacts. They have not eliminated the issues completely but have allowed us to maintain our primary goal of a healthy and available workforce to serve our membership.

Recognizing the additional economic hardship, the pandemic

has put on many of our members, the available low-income energy assistance funds have been expanded. CEC additionally augmented those resources by offering additional Family Fund and COVID-19 related hardship grants to our members. These funds were made available from unclaimed capital credits (escheats) and from generous contributions to the fund from other members. No rate dollars were utilized to add to these resources.

While the leveling or decreasing of cases and coming vaccine availability are encouraging, it is important to recognize that they are not here yet and our continued diligence is required. With that in mind, we will maintain our current operational procedures until the circumstances have actually changed. There are no specific dates included in this plan as they are dependent upon the continued decrease in cases and vaccine availability. We will do our best to continue to communicate the status as things change. When the vaccine has been provided to employees, we will let you know.

There is no one who wants to return to a world where our biggest concerns are our outage time and whether we will require a rate increase more than I, but a premature relaxing of our protocols could make the efforts we have been through to this point all for naught. There does appear to be a light at

*A Light ... /Page 3*

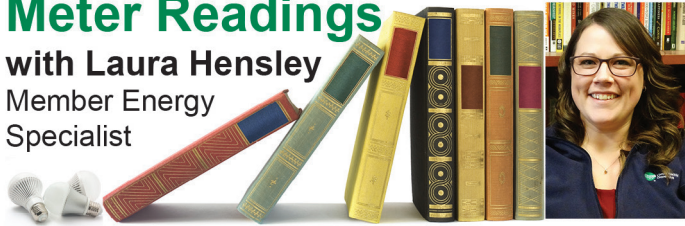
## A Light ... /From Page 2

the end of this pandemic tunnel, but it is important to note that we are still in the tunnel. We will continue to actively monitor the situation and requirements as they change and adjust as necessary and available. Our planning process includes contingencies to address unanticipated changes both positively and negatively.

## Meter Readings

with Laura Hensley

Member Energy  
Specialist



Throughout my 2021 articles, I will highlight appliances and other items that come up most when discussing energy usage with members. I will share operating costs and tips for energy savings. This month we will tackle the topic of laundry.

### Clothes Washer

The actual cost of operating a clothes washer is pretty minimal. The greatest expense is water heating, which accounts for about 90 percent of the energy consumed. Whenever you can switch from hot to warm, and ideally to cold, water settings — it is in your best energy usage interest. Most laundry detergent today is designed for cold water, so washing in cold water will yield significant savings and still get the job done.

In the last decade, clothes washers have seen a significant boost in efficiency, with both energy and water. If you have a new model, it may have many of the energy saving features built in. Always worth noting is to wash a full load or adjust water settings for smaller loads. Use a high-speed spin if it is available — it will reduce moisture and save on drying time.

If you find yourself in the market for a new clothes washer, look for one with the Energy Star

I want to express my appreciation for your continued willingness to work together until we are able to return to a more normal work environment. Our primary goal continues to be to maintain a healthy and available workforce to continue to serve our members with this essential service.

Thank you and be safe and healthy.

## Washers & Dryers

logo. According to Energy Star, these models can save you about \$35 on your utility bill and about 2,000 gallons of water annually, compared to a standard model.

### Clothes Dryer

If you wash in cold water, you can expect the greatest energy cost of doing laundry to be drying. For members with an electric clothes dryer, you can expect the cost of drying a load of laundry to be about \$0.30 - \$0.50 per load.

To save energy and money don't over-dry clothes — set the timer for the lowest amount of time you think the load will need and add small increments of time if necessary. Some dryers have a moisture sensor which allows it to shut off when the clothes are dry — saving energy and protecting fabrics. Washing and drying similar fabrics together will also cut down on drying time.

Lower heater settings will save you energy, even if the drying cycle is longer, according to Energy Star. Clothing should tumble freely in the dryer — overloading it will increase the time needed to dry. You may also try wool dryer balls, which are said to absorb some of the moisture and allow better circulation in the dryer.

For efficiency and safety, clean the lint filter after every load, periodically clean the dryer vent, and be sure the outside damper is clear and closes properly.



## The Safety Linke



*Don't be a stranger, to electrical danger.*

### Electric Supplemental Heat Sources



Manager of Safety  
& Loss Control

**Dylan Linke**

Electric space heaters and electric blankets can help warm a room quickly or take the chill off through a cold winter night. However, they can be as dangerous as they are convenient if used improperly. The following tips will help keep you safe when using space heaters or electric blankets.

- Purchase only space heaters that have been safety tested and UL approved. Make sure the unit has an emergency tip-over shut-off feature and heating element guards. Read and follow manufacturer's instructions for operation and care.
- Before using a space heater, make sure your smoke and carbon monoxide detectors are in good working condition.
- Make sure the heater is clean and in good condition.
- Place the heater out of high-traffic areas and on a level, hard, non-flammable floor surface — NOT on carpets, furniture, or countertops.
- Space heaters have one purpose — to provide supplemental heating. Never use them to thaw pipes, cook food, or dry clothing or towels.
- Remember to keep space heaters at least three feet from combustible liquids (like fuel, spray cans, and paint) and flammable items (such as draperies, blankets, and sofas).
- Never allow pets or children near an electric heater. Accidental contact could cause serious shock or burns.

- Do not overload circuits. Never use extension cords or multiple plugs with a space heater and make sure not to plug the unit into the same circuit as other electric appliances.
- If your space heater is plugged into a ground fault circuit interrupter (GFCI) and it trips, don't assume there is something wrong with the GFCI. Immediately stop using the heater until a professional can check it — if not, a serious shock could occur.
- Never leave space heaters unattended. Turn off your space heater and unplug it before leaving the room or going to bed.
- Replace older space heaters with newer, safer models.

Many people also use electric blankets to keep warm during cold winter nights. But it is important to also use these safely.

- Before plugging in electric blankets, check for any damage and inspect the cord for frays, cracks, or cuts.
- Do not tuck electric blankets under the mattress or place anything on top of the blanket while it is in use — this includes comforters and bedspreads.
- Do not allow pets to sleep on the electric blanket.
- If your blanket is equipped with a timer, do not override the timing device as it is intended for safety purposes.



## Are You Interested in a CEC Director's Seat?

As a CEC member, you have a voice in who serves on the eight-member board of directors. Every year, members elect two directors for a four-year term. Director seats are divided among the counties the cooperative serves. This year, resident members from Clarion and Venango counties are invited to run for these two seats. To be eligible for nomination you must be a CEC member in good standing, have a permanent residence in that county, and meet other qualifications required by CEC's bylaws.

Please submit the coupon below by April 1, 2021 to receive a qualifications list and nominating petition. If you meet the qualifications, you will then send a written request, including your full name, address, telephone number, county of residence, and account number, along with a completed petition signed by 20 cooperative members to the nominating committee by May 1, 2021.

After the cooperative confirms your eligibility, you will attend an orientation meeting and meet

with the nominating committee for an interview. The committee then submits a list of the eligible candidates for placement on the ballot.

Nominee names, along with a photo and background information, are presented in the July issue of Power Lines. Cooperative members will vote by mail or Internet prior to the annual meeting, or vote by paper ballot on the day of the meeting, Aug. 20, 2021, prior to the meeting's commencement. Election results will be announced prior to adjournment.

More information about running for the board is available by visiting [www.central.coop](http://www.central.coop).

**Your board of directors has appointed a nominating committee to review prospective candidates interested in running for CEC director.**

**Committee members are:**

**Armstrong County**

**Harvey W. Loose**  
East Brady

**Forest County**

**Dennis Lamb**  
Tionesta

**Butler County**

**Joe Gibson**  
Parker

**Venango County**

**Carl E. Gadsby**  
Grove City

**Ronald Morrison**  
Cabot

**Ron Paranick**  
Cranberry

**Clarion County**

**James M. Reed**  
Fryburg

**Randy Tharan**  
Knox



If you are interested in being considered as a director nominee, please complete this coupon and return it by April 1, 2021 to: Central Electric Cooperative, Nominating Committee, PO Box 329, 716 Route 368, Parker, PA 16049.

Please send me a qualification list and petition requirements for being a director nominee to Central Electric Cooperative's Board of Directors.

Name: \_\_\_\_\_

Address: \_\_\_\_\_

Telephone: \_\_\_\_\_

County: \_\_\_\_\_ Account: \_\_\_\_\_

## Recipe of the Month

### Crispy Onion Chicken

**Ingredients:**

- 1/2 cup oleo (margarine), melted
- 1 tablespoon Worcestershire sauce
- 1 teaspoon ground mustard
- 1/2 teaspoon garlic salt
- 1/4 teaspoon pepper
- 6-ounces french fried onions, crushed
- 4 boneless chicken breast halves

**Directions:**

Heat oven to 350 degrees. In a shallow bowl mix oleo, Worcestershire sauce, mustard, garlic salt, and pepper. Dip chicken in mixture, then coat with onions. Place in greased 9-inch square pan. Top with remaining onions and drizzle with remaining oleo mixture. Bake for 45-60 minutes or until chicken juices run clear.

*Thank you to Kathy Guth for submitting this recipe!*

## CEC Management Team

Matthew P. Boshaw  
CEO & General Manager

Chester Conti  
Director of Finance and  
Accounting/CFO

Christopher W. Kossman  
Director of Information Technology

Stephanie Deal  
Director of Human Resources

Fred E. Terwilliger  
Assistant General Manager/COO

Lisa A. Hoover  
Director of Member Services

## Read Power Lines and Win!

Last Issue's Winner:

**Mark Stern of Cowansville**

Last Issue's E-Winner:

**Donna Anthony of Fenelton**

Read Power Lines for a chance to win a \$25 credit on your monthly electric bill by completing and returning the quiz below. You can also have a chance at another \$25 bill credit by submitting a quiz online at [www.central.coop](http://www.central.coop).

If you don't have access to the Internet, indicate that on the quiz and we'll also enter you in the online drawing. Just complete and enclose the quiz and personal information below and return it with your monthly payment.

**1. True or False:** CEC's primary goal with the pandemic is to maintain a healthy and available workforce to continue to serve our members.

**Answer:** \_\_\_\_\_

**2. True or False:** Space heaters should be at least three feet from combustible liquids.

**Answer:** \_\_\_\_\_

**3. True or False:** The greatest expense with clothes washing is the spin cycle.

**Answer:** \_\_\_\_\_

**How are we doing?** (no wrong answer)

\_\_\_\_\_

\_\_\_\_\_

\_\_\_\_\_

**Name:** \_\_\_\_\_

**Phone:** \_\_\_\_\_

**Acct. #:** \_\_\_\_\_



Central Electric Cooperative

A Touchstone Energy Cooperative

716 Route 368, P.O. Box 329, Parker, PA 16049

Newsletter Editor: Renee Tritten