

## Inside: Learn How To ...

Register for Our  
2016 Annual Meeting

Contact 8-1-1 to  
Know What's Below

## "Watts" Inside

New Water Heater Program 3

Tree Contacting Power  
Line Safety 3

2016 Good Neighbor  
Scholarship Winners 4

Rate Change 5

Register for Annual Meeting 5

Strawberry Yogurt Dip &  
Lemon Herb Salad  
Dressing Recipes 6

## Board of Directors

Jody P. Weaver  
*President*

Kenneth Durrett  
*Vice President*

Althea M. Smith  
*Secretary/Treasurer*

William J. Eichner  
Kenneth D. Etzel  
Nancy Lendyak  
Bette D. Walters  
Richard L. Weaver

# PowerLines

2014 Photo Contest Entry  
Photographed by Pat Trinidad of Valencia

## Keep Moving Forward

by Matthew Boshaw, CEO & General Manager

I am a fan of all things Disney®. The movies, the television channel and especially the parks. Some of my fondest family memories include Disney®. My wife and I were even married there. One of the quotes I have heard most often attributed to Walt Disney is "Around here we don't look backwards for very long. We keep moving forward, opening new doors and doing new things, because we're curious ... and curiosity keeps leading us down new paths." This quote has always resonated with me because, while I think we should learn from our past mistakes and successes, new challenges require us to keep changing to have continued success. However, the quote does mention that while the look may be brief, it is important to look back.

I would like to take a moment to look back. Three years ago this

month, Central Electric Cooperative (CEC) suffered a huge loss when we lost a coworker and a friend to a fatal accident. As an organization we grieved. We have remembrances throughout our facility in the form of plaques, a tree, a bird bath constructed by one of our linemen and even a quilt given to us by a thoughtful member. There have been events to raise scholarship funds and to recognize and appreciate the work that linemen do.

As time has passed, and the events became fewer and further between, something became very clear. This tragic accident has become a part of who we are and what we do. We may not have a memorial service every day, but every time we hold a company event we remember. Our daily routine is certainly impacted as our awareness is heightened. The reminder to be safe carries a lot more weight today. A coworker's

**Keep Moving ... /Page 2**

## Keep Moving ... /From Page 1

reminder to follow a safe work practice is met with a “thank you” instead of a prideful “I knew that,” as there is recognition that it comes from a concern for your wellbeing.

We have a specific mission: Central Electric Cooperative provides safe, reliable electricity at a reasonable cost to our member-owners, is committed to the communities we serve, and dedicated to the Cooperative Difference. For those of you who know our employees, you know this mission statement truly reflects their efforts and dedication.

Safety is a huge part of the electric utility business and has always been of paramount importance here at CEC. This accident did not have the effect of making us work safely, our employees always work safely. It did, however, make the trainings we go through regularly more real, relevant and personal. No longer is pole-top rescue training something we just have to qualify in annually. It is a skill we want to be the absolute best at while never having to use it. The accident made our employees more willing to speak up when something seems like a safety concern. We have increased our trainings and inspections but the reason might surprise you. We didn't increase our trainings because we weren't doing all of the required trainings or enough of them, we did it to keep safety front and center, to guard against complacency and make it so much a

part of what we do that there is no working and safety, but only working safely.

It has been three years since the accident. So now, we keep moving forward. But we don't put the past behind us, we carry it with us to help make us better. I would like to thank our membership for their immediate and continued support following the accident and would like to recognize our board for being so supportive. Our employees are most deserving of my praise as they “keep moving forward.” Please join me in recognizing them and, in your own way, keep them and our fallen coworker in your prayers.

## July 1, 2016 Rate Change

- Needed due to increased costs.
- Increase of 5 percent, or about \$5 a month.
- Represents a percentage increase in kWh and base charge.

*For more information see Page 5.*

## Always Call 8-1-1 Before You Dig!

Nice weather has finally arrived! It's time to work outside. But wait! Before digging, check to see if there are any underground facilities. Just call the Pennsylvania One Call System at 8-1-1 or visit [www.paonecall.org](http://www.paonecall.org) for answers to all your questions. Make sure you call at least three working days before you plan to dig.

Whether you are a contractor, home builder or landowner the Pennsylvania One Call System can assist you in digging safely. If you have any further questions feel free to contact Caitlin Reed at CEC at 800-521-0570 x2195.

**K**en's  
low watt  
corner



www.central.coop  
Check it out!

By **Ken Maleski**  
Residential Analyst  
& Advisor



CEC has a new and improved water heater load management program. We now offer a Marathon Lifetime Water Heater installed by our professional contractor, Dr. Waterheater, for the low price of \$670 (a \$1,128 retail value). This water heater has a high-efficiency design with a lightweight tank that won't corrode. Its super insulated design keeps water hot for longer time periods, reducing operating costs while providing hot water during load control periods. Plus the limited lifetime warranty against leaks means you won't have to buy another tank for as long as you own your home. The tanks participate in our load management program which avoids purchasing energy when it's most expensive.

CEC's load management program also has options for those who aren't in the market to replace a water heater. You can earn a \$50 bill credit by

## New Water Heater Program

calling 800-521-0570 x2195 with your water heater size (in gallons) and number of family members. We then schedule a convenient time to install our demand response equipment at no cost to you. The program is designed to work with your family's hot water needs while helping stabilize future power costs for all members. Participating members also receive an ongoing \$2.50 per month bill credit.

Whether you need a new water heater or would like to save money with your existing one, call 800-521-0570 or visit us at [www.central.coop](http://www.central.coop) and click on the Energy Savings tab.



# SAFETY MATTERS

## Tree Contacting Power Line Safety

Trees provide beauty, shade, and habitat for wildlife. They help conserve soil and water and act as wind, noise, and visual buffers. Reliable electric service is also an integral part of our lives. When the two mix, a variety of safety hazards and dangers can occur. The following tips will help keep you safe in situations where trees are contacting power lines.

- Trees conduct electricity, and anyone coming into contact with a tree while it is touching a power line is likely to receive a shock resulting in serious injury or death.
- Contact by trees and other objects do not

always "kick out" the circuit. Power may continue to flow to the ground making the area around it dangerous.

- If a tree or branches of a tree are contacting, are very close to, or are in danger of contacting power lines, do not approach the tree. Stay back at least 33 feet.
- If you see a tree is contacting a power line call CEC or 911. Inform them of the location and tell them that a tree is contacting, or close to contacting, the power line.





## 2016 Good Neighbor Scholarship Winners

Congratulations to the 2016 recipients of the Good Neighbor Scholarship! This year, this no-cost-to-members program awarded 15 grants of \$2,000 to cooperative members who will further their education in 2016. For more information on this program, please visit [www.central.coop](http://www.central.coop).



**Ashley Barron**  
North Clarion  
High School



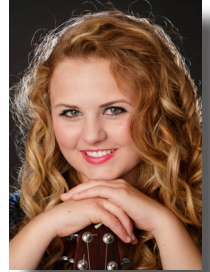
**Tyler Beal**  
Keystone  
High School



**Erika Boice**  
Karns City  
High School



**Kylee Callander**  
Clarion  
University



**Kathryn Crawford**  
Redbank Valley  
High School



**Kelly Daugherty**  
Keystone  
High School



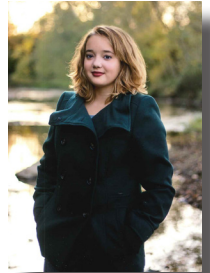
**Trapper Ferris**  
AC Valley  
High School



**Samuel Govan**  
Shippensburg  
University



**Elijah Grochalski**  
Butler Area  
High School



**Kendra Hale**  
Armstrong Area  
High School



**Hayley Kepple**  
Karns City  
High School



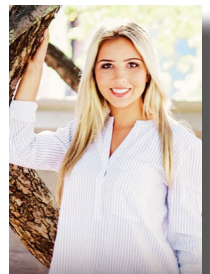
**James Pierre**  
Mars Area  
High School



**Kendra Schreck**  
Cranberry Area  
High School



**Joshua Seyler**  
Grove City  
College



**Emily Sippey**  
Mars Area  
High School

## Rate Change

Due to rising costs, CEC rates will increase by 5 percent, or about \$5 a month (for the average residential member). This change takes effect July 1, 2016 and represents an increase in both kWh cost and monthly base charge.

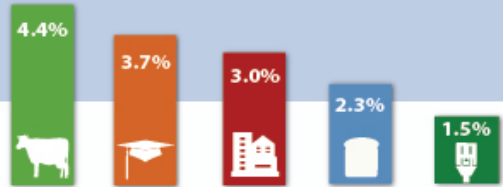
While CEC strives to keep rates as low as possible, this change was necessary to serve the membership.

CEC's last rate increase was in July 2013.

## Electricity Remains a Good Value

The cost of powering your home rises at a slower pace than many of your typical expenses. Compare the average price increase of these expenses each year over the last five years, and the value of electricity shines.

**Average Annual Price Increase**  
2010-2015



Source: U.S. Bureau of Labor Statistics Consumer Price Index

## Mark Your Calendar for our Annual Meeting of the Members

Attend the Annual Meeting of the Members on Friday, Aug. 26 at Whitehall Camp & Conference Center at 4:30 p.m. for a live performance by Isaac Cole and Mikayla Lynn, delicious meal, bill-credit voucher and chance to win a number of door prizes. Children ages 5 to 10 are also encouraged to attend to enjoy a variety of activities specifically for them! Any child registered by July 31, and attending, will

have a chance at winning an iPad mini!

You can make reservations for the meeting and for children's entertainment by completing the below form, visiting our website or calling us at 800-521-0570. Registration deadline is July 31.

For more information, directions or to check out the agenda visit [www.central.coop](http://www.central.coop).

### Annual Meeting Registration Form

Name: \_\_\_\_\_

Address: \_\_\_\_\_

Account No: \_\_\_\_\_ Phone No: \_\_\_\_\_

Please reserve a total of \_\_\_\_\_ dinners for my family as we will attend the annual meeting dinner on Aug. 26.

Children's entertainment is only provided for children ages 5 through 10. Please indicate how many children will be attending: \_\_\_\_\_ Ages of children: \_\_\_\_\_

(A child with a medical condition must be accompanied by an adult.)

Contact at meeting in case of emergency: \_\_\_\_\_

Submit your question before the meeting to allow us to answer it efficiently. (You may ask a question at the meeting even if you did not submit it ahead of time.)

My question: \_\_\_\_\_

*By attending the annual meeting, I grant CEC permission to use my likeness in photographs in any and all of its publications, including internal and external newsletters and website entries, without payment or other consideration.*

**Return this coupon to CEC by July 31, 2016.**

## Recipe of the Month

### Strawberry Yogurt Dip

**Ingredients:**

- 2 cups strawberries, rinsed and stems removed
- 1/2 cup fat-free plain yogurt
- 1/4 teaspoon vanilla
- 2 tablespoons honey

**Directions:** Cut strawberries in half. Puree them in a blender or food processor. Add yogurt, vanilla and honey. Mix well. Serve with fresh fruit.

### Lemon Herb Salad Dressing

**Ingredients:**

- 3 tablespoons lemon juice
- 3 tablespoons olive oil
- 1 tablespoon Dijon mustard
- 1 teaspoon garlic, finely minced
- 1/4 teaspoon dried oregano, crushed

**Directions:** Place ingredients in a small bowl. Whisk until smooth. Add pepper to taste.

*Thank you to Marie Cherrison for submitting these recipes!*

## Send in your recipes to be shared today!

**Send Recipes to:**

Renee Tritten at [rtritten@central.coop](mailto:rtritten@central.coop) or mail to CEC, 716 Route 368, PO Box 329, Parker, PA 16049

## CEC Management Team

Matthew P. Boshaw  
*CEO, General Manager*

Dennis W. Beggs  
*CFO, Director of Finance and Accounting*

Christopher W. Kossman  
*Director of Information Technology*

Stephanie Deal  
*Director of Human Resources*

Christina J. O'Donnell  
*Director of Member and Community Relations*

Lisa A. Hoover  
*Director of Member Services*

Fred E. Terwilliger  
*Director of Engineering and Operations*

## Read Power Lines and Win!

Last Issue's Winner:

**Patrick Tirk of Butler**

Last Issue's E-Winner:

**Alan Carmichael of Rimersburg**

Read Power Lines and win! It's simple — you can win a \$25 credit on your monthly electric bill by completing and returning the quiz below. And you have a second chance at another \$25 bill credit by submitting a quiz online at [www.central.coop](http://www.central.coop).

If you do not have access to the Internet, indicate that on the quiz and we will also enter you in the online drawing. Just complete, clip and enclose the quiz and personal information below and return it with your monthly payment. For quiz rules visit [www.central.coop](http://www.central.coop).

**1. True or False:** Before digging, you should call 8-1-1 to check if there are any underground facilities where you are going to dig.

**Answer:** \_\_\_\_\_

**2. True or False:** CEC's load management program is designed to help stabilize power costs.

**Answer:** \_\_\_\_\_

**3. True or False:** If you touch a tree that's contacting a power line you risk injury or death.

**Answer:** \_\_\_\_\_

**How are we doing?** (no wrong answer)

\_\_\_\_\_

**Name:** \_\_\_\_\_

**Address:** \_\_\_\_\_

**Phone:** \_\_\_\_\_ **Acct. #:** \_\_\_\_\_



**Central Electric Cooperative**

A Touchstone Energy® Cooperative

716 Route 368 • PO Box 329 • Parker, PA 16049-0329 • [www.central.coop](http://www.central.coop)  
Customer Service 1-800-521-0570 • Emergency Outage Number 1-800-282-8610

This institution is an equal opportunity provider and employer.