

**Inside:  
Learn How To ...**

Participate with  
Peak Alerts

Attend Our  
80th Annual Meeting

**“Watts” Inside**

- Work Zone Driving Safety 3
- Peak Alert Season 3
- 2017 Good Neighbor  
Scholarship Winners 4
- Register for 80th  
Anniversary Celebration 5
- Apricot Salad Recipe 6

**Board of Directors**

Jody P. Weaver  
*President*

Kenneth Durrett  
*Vice President*

Althea M. Smith  
*Secretary/Treasurer*

William J. Eichner  
Kenneth D. Etzel  
Nancy Lendyak  
Bette D. Walters  
Richard L. Weaver



**Photographer: Dave Schmude of Cranberry**

**All Politics are Local**

*by Matthew Boshaw, CEO & General Manager*

It’s been said electric cooperatives were born in politics. Back in the 1930s, local communities saw the need for the electrification of rural America and our president at the time, Franklin Roosevelt, understood that need. He recognized that a strong rural America was the foundation of our economic engine and was essential to literally feeding America and our long-term success. This year Central Electric Cooperative (CEC) celebrates 80 years of working towards that endeavor.

As I write this article, I recently returned from the National Rural Electric Cooperative Association (NRECA) Legislative Conference in our nation’s capital. This event brings thousands of electric cooperative board members and staff, from 47 states, to the capital to meet with congressmen and senators.

The purpose of this is to provide representatives with information regarding issues having direct impact on cooperative members and their communities.

Perhaps more important than the issues we discuss is our very presence and whom we represent. NRECA and the Pennsylvania Rural Electric Association (PREA) both have lobbying teams who work with our federal and state legislators to represent the interests of cooperatives in Harrisburg and Washington all year long. Unlike other lobbyists, our teams don’t represent an industry or a company, or have substantial financial resources at their disposal to get them in the door. Our team is at the table because they represent you. When a PREA lobbyist is discussing an issue with a lawmaker or their staff, the lawmaker knows that they represent thousands of individual

***All Politics are Local /Page 2***

## *All Politics are Local /From Page 1*

constituents. Many of those constituents have known these lawmakers for years and have grown up in the same communities. It is in these long-term relationships that the notion of all politics being local is born. All politics are local because they begin with you. When we descend on Washington or Harrisburg in significant numbers that represent even greater numbers, our lawmakers are reminded that those who represent us throughout the year are truly representing all of us and the meetings are impactful. During the meetings, we reinforce the issues that are important to electric cooperatives, but we also offer ourselves as resources as issues arise in our areas of expertise. Lastly, we remind those in power that we are grateful for their support and for their willingness to work with us and our representatives throughout the year.

CEC is particularly well represented in Washington and Harrisburg. Our lawmakers are from our communities, share our concerns and work for changes that will positively impact our entire service territory. You have seen many of these elected officials at our annual meeting each year. Our continued relationship with all our elected officials is invaluable. With that in mind, I would be remiss if I didn't take the opportunity to invite all of you to take an active role in that relationship through two important initiatives. First, and most directly, I would like you to consider joining me, your board of directors and cooperative

employees in the Action Committee for Rural Electrification (ACRE) by becoming a member of Co-op Owners for Political Action®. Go to our website or give us a call and get involved in supporting issues that have direct impact on your cooperative. ACRE is bi-partisan and supports candidates for state and federal office — those in office now and running for office — who will speak for and protect the interests of electric cooperatives and their consumer-owners. The second initiative I would like to keep in your mind is Co-ops Vote. This non-partisan effort helped to raise voter turnout in rural cooperative service territories during the last election while voter turnout was declining in other areas. We don't ask you to vote in a specific way, we just ask you to vote. While this initiative is more prevalent during election cycles, it is important to raise voter awareness at all times.

Let me leave you with these thoughts. Your cooperative works hard to bring you reliable service at an affordable rate. To make that possible we need the support of our elected officials. That support only exists, and will only continue to exist, because those officials know and work with us, as one of us. The best way to maintain these relationships is to be active participants in the process. So, keep voting and join us in ACRE Co-op Owners for Political Action® to further remind our elected officials we're all in this together.

“Your cooperative works hard to bring you reliable service at an affordable rate. To make that possible we need the support of our elected officials. That support only exists, and will only continue to exist, because those officials know and work with us, as one of us. The best way to maintain these relationships is to be active participants in the process. So, keep voting and join us in ACRE Co-op Owners for Political Action® to further remind our elected officials we're all in this together.”

Matt Boshaw, CEO & General Manager

# SAFETY MATTERS

## Work Zone Driving Safety


According to the U.S. Department of Transportation, more than 4,400 people have died in work zone crashes in the past five years. Over 85 percent of those who died were either the driver or passenger. Another 200,000 people have been injured in the same time period. The following tips will help keep you and others safe while you drive in road construction areas.

- Stay alert and minimize distractions. Dedicate your full attention to the roadway. Avoid changing the radio station, using a mobile phone, eating, or other distractions that remove your concentration from the road.
- Keep your headlights on.

- Pay attention to the road. Follow road signs, watch brake lights on vehicles ahead and watch traffic around being prepared to react.
- Merge into the proper lane — well before you reach a lane closure. Be aware that traffic patterns can change daily.
- Don't tailgate. Follow other vehicles at a safe distance.
- Obey the posted speed limit. Workers may be present just feet away. Fines may be doubled for moving-traffic violations. Be prepared to slow down further if conditions indicate the need.




**K**en's  
ilowatt  
corner



www.central.coop  
Check it out!

**By Ken Maleski**  
Energy Analyst &  
Member Advocate



From time to time you may hear our summer Peak Alert announcements on FROGGY-FM 98.5, WUZZ-FM 107.7, and MAJIC-FM 99.3 radio stations. You may also see them on our website ([www.central.coop](http://www.central.coop)) or on Twitter (@centralcoop). Peak Alerts are not a notice of a power shortage. They are simply our way of asking you to conserve or reduce electric usage because it's a high-demand period when electricity prices are highest.

You don't have to hear a Peak Alert to help. Alerts are likely to occur Monday through Friday from 1 to 6 p.m. on extremely hot and humid days

## Peak Alert Season

from June to September. Here are some other ways you can help:

- Raise air conditioning thermostat to 78 degrees or higher.
- Turn off dehumidifiers and pool pumps.
- Turn off lights and appliances when not in use.
- Delay doing laundry, running the dishwasher or using other major appliances.
- Grill outside instead of using the range.

Peak Alerts are a way we can work together to keep rates low.



**Time is running out!  
Enter our photo contest now!**

Entries must be received before  
June 9. Visit [www.central.coop](http://www.central.coop)  
for more information.

**Peak Alert Season  
Has Started!**

When you hear an alert, reduce your  
usage of non-essential electric items.

Together we can keep rates stable  
— it is the cooperative way!

## 2017 Good Neighbor Scholarship Winners

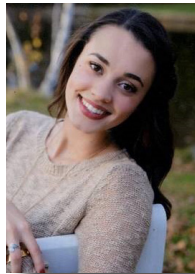
Congratulations to the 2017 recipients of the Good Neighbor Scholarship! This year, this no-cost-to-members program awarded 10 grants of \$2,000 to cooperative members who will further their education in 2017. For more information on this program, please visit [www.central.coop](http://www.central.coop).



**Olivia Barner**  
Mars Area  
High School



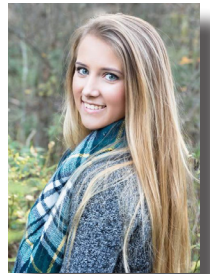
**Lauren Broad**  
Butler  
Community  
College



**Hannah  
Carlino**  
Penn State  
Behrend



**Abigail  
Caulfield**  
Keystone  
High School



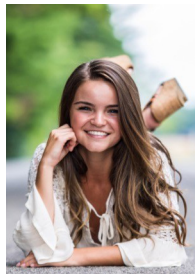
**Grace Hogue**  
Keystone  
High School



**Michelle  
Keith**  
Waynesburg  
College



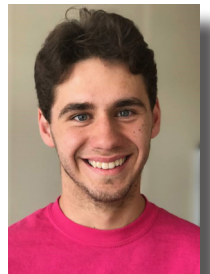
**Dori Kralj**  
AC Valley  
High School



**Forest Mills**  
Clarion Area  
High School



**Brooke  
Schafers**  
Slippery Rock  
High School



**Noah  
Tabacchi**  
Knoch Area  
High School

## Mark Your Calendar for Our 80th Anniversary Celebration & Annual Meeting

Attend the Annual Meeting of the Members on Friday, Aug. 25 at Whitehall Camp & Conference Center at 4:30 p.m. for a live performance by Pittsburgh's favorite oldies band, American Pie, delicious meal, bill-credit voucher and chance to win a number of door prizes.



You can make reservations for the meeting and for children's entertainment by completing the form below, visiting our website or calling us at 800-521-0570.

Registration deadline is July 31. For more information, directions or to check out the agenda visit [www.central.coop](http://www.central.coop).



Children ages 5 to 10 are also encouraged to attend and enjoy a variety of activities specifically for them! Any child registered by July 31, and attending, will have a chance at winning an iPad mini!



### Annual Meeting Registration Form

Name: \_\_\_\_\_

Address: \_\_\_\_\_

Account No: \_\_\_\_\_ Phone No: \_\_\_\_\_

Please reserve a total of \_\_\_\_\_ dinners for my family at the annual meeting on Aug. 25.

**Children's entertainment is for children ages 5 through 10 only.**

How many children will attend: \_\_\_\_\_ Ages of children: \_\_\_\_\_

Contact at meeting in case of emergency: \_\_\_\_\_

Submit your question before the meeting to allow us to answer it efficiently. (You may ask a question at the meeting even if you did not submit it ahead of time.)

My question: \_\_\_\_\_

*By attending the annual meeting, I grant CEC permission to use my likeness in photographs in any and all of its publications, including internal and external newsletters and website entries, without payment or other consideration.*

**Return this coupon to CEC by July 31.**

## Recipe of the Month

### Apricot Salad

**Ingredients:**

- 1 large box apricot JELL-O®
- 1-20 ounce can crushed pineapple
- 8 ounces cream cheese
- 2 large jars apricot baby food
- 1 large Cool Whip®
- 3/4 cup sugar

**Directions:** Heat pineapple and JELL-O® in large pan until JELL-O® is dissolved. Add sugar and baby food and mix well. Add cream cheese and simmer until cheese dissolves. Cool until thickened and then fold in Cool Whip®. Put in dish and sprinkle with nuts (optional).

*Thank you to Brenda Turner  
for submitting this recipe!*

## Send in your recipes to be shared today!

Send Recipes to: Renee Tritten at rtritten@central.coop  
or mail to CEC, P.O. Box 329, Parker, PA 16049

## CEC Management Team

Matthew P. Boshaw  
CEO & General Manager

Dennis W. Beggs  
Director of Finance and  
Accounting/CFO

Christopher W. Kossman  
Director of Information Technology

Stephanie Deal  
Director of Human Resources

Fred E. Terwilliger  
Assistant General Manager/COO

Lisa A. Hoover  
Director of Member Services

## Read Power Lines and Win!

Last Issue's Winner:

**Margo Perotti from Butler**

Last Issue's E-Winner:

**Wilbur Lewis of Knox**

Read Power Lines and win a \$25 credit on your monthly electric bill by completing and returning the quiz below. You can also have a chance at another \$25 bill credit by submitting a quiz online at [www.central.coop](http://www.central.coop).

If you don't have access to the Internet, indicate that on the quiz and we'll also enter you in the online drawing. Just complete and enclose the quiz and personal information below and return it with your monthly payment. For quiz rules visit [www.central.coop](http://www.central.coop).

**1. True or False:** Peak Alerts are our way of asking you to reduce electric usage during a high demand period.

**Answer:** \_\_\_\_\_

**2. True or False:** You should merge well before you reach a lane closure in road construction areas.

**Answer:** \_\_\_\_\_

**3. True or False:** ACRE supports candidates who speak for, and protect, cooperative interests.

**Answer:** \_\_\_\_\_

**How are we doing?** (no wrong answer)

\_\_\_\_\_

\_\_\_\_\_

**Name:** \_\_\_\_\_

\_\_\_\_\_

**Address:** \_\_\_\_\_

\_\_\_\_\_

**Phone:** \_\_\_\_\_ **Acct. #:** \_\_\_\_\_



Central Electric Cooperative

A Touchstone Energy® Cooperative

716 Route 368, P.O. Box 329, Parker, PA 16049

Newsletter Editor: Renee Tritten