

**Inside
Learn How to:**

Attend Our First Responders Training

Bring Our Safety City Presentation to Your Event or School

“Watts” Inside

Usage Comparison on Your Bill	3
2019 Coloring Contest Winners	3
First Responders Training	4
Line Clearing to Improve System Reliability	4
Safety City Presentation	5
USX Credit Union	5
Blueberry Coffee Cake Recipe	6

Board of Directors

Jody P. Weaver
President

Kenneth Durrett
Vice President

Althea M. Smith
Secretary/Treasurer

Kenneth D. Etzel
Nancy Lendyak
Robert W. Smith
Bette D. Walters
Richard L. Weaver



Power Lines

Photo by Caleb Wright on Unsplash

Safety Presentation Season

by Matthew Boshaw, CEO & General Manager

Safety is the top priority at Central Electric Cooperative (CEC). It is first in our mission and vision statement, values, strategic initiatives, and everyday life for our employees. As a member-owned organization, we don’t think our safety goals stop at the edge of the right-of-way or at our office door. We take the responsibility of providing this essential service safely in the communities we serve just as seriously. In addition to designing, constructing, and maintaining our facilities in a manner which makes them safe to be in the community, we feel strongly about the importance of educating the public on the potential hazards that exist around electricity. Which is why we offer various presentations that can be worked into different types of events designed to specifically educate the community and highlight the potential hazards regarding

electricity in everyday situations.

Every season is safety season for CEC, but the spring seems to kick off the majority of the requests we receive to make safety presentations. This is a particularly valuable time of year for these programs.

First, we provide safety related tips in our advertising and Power Lines newsletter. With the weather breaking — hopefully — we will all be out and about more and conditions could have changed during the winter months, so refreshers and reminders about potential hazards and how to behave around them are timely. Most electrical contact accidents can be easily avoided with minimal effort. There are some standard reminders that can seem like common sense, but can be life savers. If you are going to be digging call 800-242-1776, or 8-1-1, and all utilities will come mark the location of their

Safety Presentation ... /Page 2

Safety Presentation ... /From Page 1

underground facilities so that you can avoid them. When climbing ladders or doing any work that is above your head, simply look up and identify where the wires are before you start. It might seem like common sense but the more time that has passed between now, and the last time you walked up that ladder makes it easier to forget some of the smallest steps. As always, treat any downed wire as live. Unlike in the movies, energized wires don't always jump around making noise and sparking. As a matter of fact, they are usually quiet and still. A good rule of thumb is if you can't see both ends of a wire, consider it live.

Second, the school year is reaching its final semester and electrical curriculum can be augmented by our Safety City Presentation. CEC offers this electric safety program to fourth and fifth grade classes throughout our service territory. (If you are interested in this program please see the article later in this newsletter.) This program is very well received and our number of presentations has been increasing every year. This is a great time of year to schedule a presentation as we are heading to the latter half of the school year and it can often coincide with an electricity lesson in the classroom. I have had the good fortune to give the presentation many times in Illinois and Oregon, and I am pleased we do it here. Sometimes we busy adults get complacent and don't pay attention to the excellent lessons illustrated in the presentation. Every accident depicted in the presentation

has unfortunately happened to someone. They are common activities that have led to accidents and injuries, simply because the victim wasn't paying attention to the potential hazard of electrical contact. Whenever I give these presentations, I start by reminding everyone of how great it is to have electricity available for everything we use it for but also remind them it is only beneficial when used correctly and safely.

Lastly, we hold a First Responder's Training designed to educate and inform police, fire, and road crews about the dangers they might be exposed to, and how to mitigate them, as the first to arrive on an accident scene. Last year over 100 first responders in our area participated (for more information on the 2020 event please see the article later in this newsletter).

In 2019, CEC employees participated in 16 events and provided information to almost 1,800 people regarding electrical hazards and safety. These events included community events, presentations at our office, and visits to local schools. Educating our membership on the safe uses of electricity, as well as the potential hazards it presents, is important to us. As I mentioned earlier, we provided this service to nearly 1,800 people in 2019 and our goal is to grow that number in 2020.

The easiest incident to deal with is the one that never happens. Please join us in our efforts to keep our communities as safe as they can be.

Annual Pole Inspection Notice

Osmose Utility Services will begin inspecting poles in the Beaver (Knox) and Rimersburg substation areas on or around April 1.

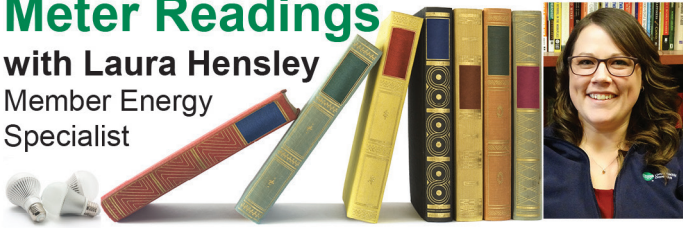
They will be inspecting approximately 6,300 poles.

All Osmose personnel have company issued identification.

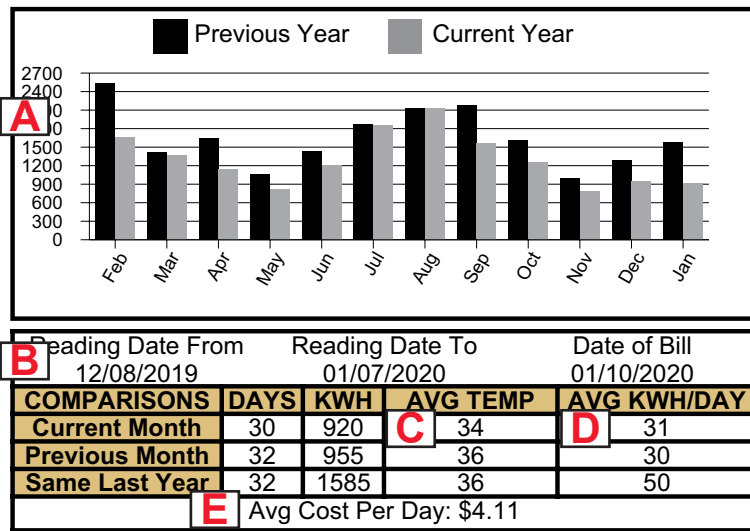
Please contact CEC with any questions or issues at 800-521-0570.

Meter Readings

with **Laura Hensley**
Member Energy
Specialist



Have you taken a look at the back of your monthly CEC statement? Your statement offers insights to the way your home uses electricity and, in turn, what makes up your monthly charges.



Usage Comparison on Your Bill

The graph located on the back of your bill offers a visual comparison of this year's electric usage against last year's usage. The bottom chart offers daily kilowatt-hour (kWh) averages and comparisons to make the usage information more manageable.

If you have an interest in your actual, daily electric usage please take a look at the *Usage Explorer* in our online account center, SmartHub, by going to central.smarthub.coop.

- A.** Total kWh. Your monthly amount due is based on total kWh consumed.
- B.** Dates related to current statement.
- C.** Average temperature for the respective months — often useful for explaining changes in kWh usage.
- D.** Average, daily kWh consumed in the current month, previous month, and same month last year.
- E.** Average cost per day for electricity during the current period.

Congratulations to Our 2019 Coloring Contest Winners!



Brielle Smith, age 7,
of Hawthorn



Aaron Smith, age 9,
of Emlenton



Leah Allio, age 11,
of Tionesta



The Safety Linke



Don't be a stranger, to electrical danger.

First Responders Electrical Hazards Training



Manager of Safety
& Loss Control

Dylan Linke

CEC understands the importance of teaching electrical safety. The goal of our First Responders Electrical Hazards Training is to help first responders work safely in emergency situations where electric utility lines are involved.

Firefighters, police, EMT's, township supervisors, and others are typically the first on the scene of an emergency. They face the greatest risk of electrical contacts and fires. Understanding the potential dangers and learning how to manage those situations makes everyone safer.

All first responders within Allegheny, Armstrong, Butler, Clarion, Forest, Mercer, and Venango counties are invited to attend this training on Thursday, April 2, 2020 at CEC headquarters in Parker. This event will begin at

7:00 p.m. and is scheduled to end at approximately 9:00 p.m. All attendees will view a high voltage, hot line demonstration and an electrical safety presentation. In addition to a great experience and a wealth of knowledge, light refreshments and informational materials will be provided. CEC's training is designed and intended to supplement, not replace, your organization's standard operating procedures (SOP).

If members of your organization would like to attend or need more information, please contact Natalie Russell at 800-521-0570 x2208. Space is limited so please reserve your spot before Friday, March 6, 2020. This training is not suitable for children. We welcome the submission of questions regarding this training in advance.

**This training is dedicated to the memory of Mike Over,
CEC Journeyman Lineman — Gone But Never Forgotten.**

CEC Continues Line Clearing to Improve System Reliability

Trees are the number one cause of power outages and service interruptions. As part of CEC's ongoing efforts to improve system reliability, contracted line clearing crews are working on circuits originating from Nectarine (Harrisville), Sandy Creek (Franklin), and Bullion (Kennerdell) substations in Butler and Venango counties in 2020.

CEC will be utilizing a variety of contractors in 2020 which include Hazlett Tree Service, Davey Tree Service, and Penn Line Tree Service.

CEC members, and others with CEC's electric poles on their property, may encounter contracted

crews working and may be approached by CEC or Hazlett, Davey, or Penn Line employees. All contractor representatives and CEC employees carry company-issued identification.

CEC respects property owners' rights and will complete the work required as quickly as possible and professionally.

The project will last throughout 2020. If you have any questions or comments, please contact CEC's Forestry Supervisor, Brice Stewart, at 800-521-0570 x2210.

We appreciate your patience and cooperation during these improvements.

Safety City Presentation

Every year thousands of accidents happen involving electricity. CEC is committed to raising awareness about electrical safety.

Our Safety City Presentation is a no-cost, educational electrical-safety demonstration for fourth and fifth grade students. This program offers students a fun, hands-on experience that helps take electrical safety from just words, to real life examples.

CEC's table top display shows common electrical safety accidents and teaches students to be aware of electrical hazards in their surroundings. Materials are also distributed for students to take home and share what they learned — including what steps they can take to prevent being one of the hundreds of deaths and thousands of injuries that occur each year because of electrical hazards.

CEC's Safety City Presentation can be brought to any organization, event, or school.

If you are interested in scheduling, or for more information, please contact Emily Shumaker at 800-521-0570 x2152.

Together we can save lives and prevent potentially hazardous, electric-related situations.



**U\$X
FEDERAL
CREDIT UNION**

www.usxfc.org
1-888-219-3159

**9 LOCATIONS: Including
2 conveniently located**

Sarver **Cranberry Main**
479 N Pike Rd 1293 Freedom Rd
Sarver PA Cranberry Twp PA

YOU

*have the opportunity to experience the
Credit Union Difference!*

Eligibility for membership:

Employees and members of Central Electric Cooperative and their families are eligible.

VISA® Platinum Credit Card

✓ Low, fixed rates 9.90% - 15.90% APR*



✓ NO balance transfer fee ✓ NO annual fee ✓ NO cash advance fee

PLUS..You'll earn a full 1% Reward on ALL your purchases with NO limit on how much you can earn! Choose from cash back, products, travel experiences, activities, event tickets, gift cards and more! Contact Credit Union for full details.

*APR = Annual Percentage Rate. Rates subject to change. Approval, actual card given and interest rate will be based on credit worthiness.

U\$X FEDERAL CREDIT UNION®

Open a Youth Account
for your child or grandchild
and receive an extra
\$10 BONUS
deposit into the child's account!

Cannot be combined with any other offer. Restrictions may apply. Limited time offer may be discontinued at any time. Contact Credit Union for full details. CEC

U\$X FEDERAL CREDIT UNION®

Receive **\$100**
when you get pre-approved for a
New or Used Auto Loan with U\$X FCU.

Contact Credit Union for full details.
Approval and interest rate given will be based on credit worthiness and are subject to normal underwriting guidelines. CEC

U\$X FEDERAL CREDIT UNION®

Receive a
FREE
Credit Score Review.
Cannot be combined with any other offer. Restrictions may apply. Limited time offer may be discontinued at any time. Contact Credit Union for full details. CEC

U\$X FEDERAL CREDIT UNION®

Receive **\$100**
**+FREE Savings Account when you
open a U\$X FCU Checking Account**
Cannot be combined with any other offer. Restrictions may apply. Limited time offer may be discontinued at any time. Contact Credit Union for full details. CEC

Recipe of the Month

Blueberry Coffee Cake

Ingredients:

- 2 packages blueberry muffin mix
- 1 cup dark brown sugar, packed
- 3 tablespoons flour
- 1 teaspoon cinnamon
- 1 teaspoon nutmeg

Directions: Make muffin mix according to the directions on the box. Pour into a lightly greased 9 x 13 pan. In a separate bowl, mix together the brown sugar, flour, cinnamon, and nutmeg. Sprinkle this mixture over the blueberry muffin mix. Add a few drops of butter. Sprinkle a little water over the entire pan. Bake at 400 degrees for 25 minutes.

*Thank you to Louise Sotace
for submitting this recipe!*

CEC Management Team

Matthew P. Boshaw
CEO & General Manager

Chester Conti
Director of Finance and
Accounting/CFO

Christopher W. Kossman
Director of Information Technology

Stephanie Deal
Director of Human Resources

Fred E. Terwilliger
Assistant General Manager/COO

Lisa A. Hoover
Director of Member Services

Read Power Lines and Win!

Last Issue's Winner:

Linda Mahood of Parker

Last Issue's E-Winner:

Cheryl Albert of Harrisville

Read Power Lines for a chance to win a \$25 credit on your monthly electric bill by completing and returning the quiz below. You can also have a chance at another \$25 bill credit by submitting a quiz online at www.central.coop.

If you don't have access to the Internet, indicate that on the quiz and we'll also enter you in the online drawing. Just complete and enclose the quiz and personal information below and return it with your monthly payment.

1. True or False: CEC's First Responder Training is free for all local first responders to attend.

Answer: _____

2. True or False: The graph located on the back of your bill offers a visual comparison of your usage this year against last year.

Answer: _____

3. True or False: Downed power lines have to be arcing and sparking to be live and dangerous.

Answer: _____

How are we doing? (no wrong answer)

Name: _____

Phone: _____ **Acct. #:** _____



Central Electric Cooperative

A Touchstone Energy Cooperative

716 Route 368, P.O. Box 329, Parker, PA 16049

Newsletter Editor: Renee Tritten