

**Inside
Learn How to:**

Join ACRE!

Decorate for the
Holidays Safely

“Watts” Inside

Energy Savings in the Kitchen	3
Outdoor Decorating Safety	3
CEC’s 82nd Annual Meeting	4
Make a Difference: Join ACRE!	5
Turkey Stuffing Casserole Recipe	6

Board of Directors

Jody P. Weaver
President

Kenneth Durrett
Vice President

Althea M. Smith
Secretary/Treasurer

Kenneth D. Etzel
Nancy Lendyak
Robert W. Smith
Bette D. Walters
Richard L. Weaver



PowerLines

Photo by Akemi Hoffman of Clintonville

Safety Again and Still

by Matthew Boshaw, CEO & General Manager

One year ago, this month saw one of the worst storms in Central Electric Cooperative’s (CEC) 82-year history. Last month I recapped my remarks from CEC’s annual meeting, including the silver lining of over 100 people working directly on behalf of CEC in storm restoration with no injuries or accidents to report. This highlights the efforts that all our employees make to work safely in supplying this essential service to our members.

The lack of accidents does not happen by chance and our efforts are not limited to keeping our employees safe. In September, your member-elected Board of Directors met in a strategic planning workshop designed to review and revise our mission and vision statements as well as our values and strategic initiatives. This is vitally important to those of us charged with managing cooperative operations’, as the results provide us clear direction and

priority regarding where the Board, and by extension, the membership feel our resources should be utilized. In each area that our Board updated, safety was given the highest priority. I can’t describe how important this commitment to safety from our Board is to our ability to do our work.

Safety is not a separate function from the work we perform, it is integral to all that we do. Electricity is powerful and can be dangerous, so we strive to be comprehensive and relentless in our goal to safely provide electric service to our members.

Let me start with comprehensive. Working safely requires that our employees are well trained and knowledgeable about the work they do. If we were to make things fool proof, we would end up with fools.

Safety ... /Page 2

Safety ... /From Page 1

To Celebrate the Holidays CEC will be Closed:

- Nov. 28 for Thanksgiving (normal hours resume Nov. 29).
- Dec. 24 at noon in observance of Christmas Eve.
- Dec. 25 in observance of Christmas Day (normal hours resume Dec. 26).
- Dec. 31 at noon in observance of New Year's Eve.
- Jan. 1 in observance of New Year's Day (normal hours resume Jan. 2).

Instead, we challenge our employees to understand not just what they do but why they do it, especially in areas that pertain to safety. Our training includes, but is not limited to, OSHA rules and compliance, electrical codes, knowledge of electricity, the proper use of tools and protective equipment, emergency procedures and much more.

Safety doesn't stop with our employees. As I said, our mission is to safely provide this service and that service is provided to you. The safety of our members and the public is a big part of our first priority. In addition to using materials and equipment designed to meet codes and allow this powerful service to safely enter your homes and businesses, we are continually working to educate those that don't spend every day of their lives talking about electricity and how to avoid potential hazards or how to react if faced with a dangerous situation.

We offer Safety City presentations to elementary school students describing how electricity works and how to identify and avoid hazards. We provide a first responders training for police, fire, PennDot, township employees and others that also describes how electricity works and what to expect and do in hazardous conditions that involve electricity when arriving on scene.

You have probably heard CEC Employees on the radio talking about safe practices as well. We provide safety tips on our website, in newsletters, and if you haven't noticed

by now, I write a lot of articles about electrical safety.

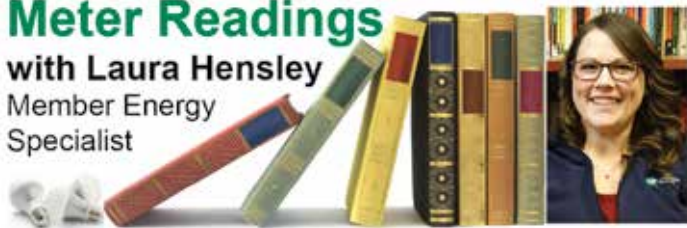
All these examples touch on the comprehensive part, so what about the relentless? Perhaps the biggest enemy of any safety program is complacency. You can have all the programs in the world and still not work safely if you are not keeping safety first in your mind. Much like the police sergeant in "Hill Street Blues" (an old TV show from the 1980's for you millennials) ending his morning briefing with the reminder "Let's be careful out there!" we are constantly reminding our employees and the public of the importance of being diligent regarding safety. We regularly audit our work and have others inspect and review our work so that safe practices are identified and discussed so regularly they become naturally included with our work. We inspect and maintain our tools and equipment prior to each use. Safety is the first priority in every goal and department of the cooperative. Every meeting begins and ends with a safety specific message. Our families are also part of the reminder, and the biggest reason we listen. It doesn't take long to realize that if we aren't working safely, there really isn't much else that matters.

Please follow our lead and that of your Board of Directors to make electrical safety the highest of priorities. We will keep reminding you and to steal Sergeant Phil Esterhaus' most important line, "Let's be careful out there!"

Meter Readings

with Laura Hensley

Member Energy
Specialist



With the holidays approaching, remember that all of the extra time spent in the kitchen doesn't have to break the bank. While being festive, you can also keep in mind some energy-saving practices when it comes to holiday meals.

- Using glass or ceramic baking dishes in the oven will assist with faster cook times.
- Use the oven light to check on food, rather than opening the door. Each time warm air escapes, your oven uses more energy to raise the temperature back up.
- For stovetop cooking, use pans matching the size of the burner, use the smallest pan possible, and use pot lids to expedite cooking time.
- Use a slow cooker when possible.

Energy Savings in the Kitchen

- Fill up the dishwasher. It will cost the same to wash one dish as an entire load.
- Try the air-dry setting if your dishwasher has it, and use the shortest cycle possible for the job.
- If you wash by hand, rinse in groups and don't allow the water to run continuously.
- Place leftovers in airtight containers, or cover tightly, to prevent excess moisture from making the refrigerator work harder.
- Label those leftovers so you spend less time with the refrigerator door open.
- Reheat in the microwave, which uses less energy than the oven and stovetop.

Lastly, don't forget about all of the extra work your water heater is doing when you are active in the kitchen and have additional guests. Limiting the use of hot water will save on your energy bill.

SAFETY MATTERS

Outdoor Decorating Safety

During holidays, many people decorate their homes with bright strands of lights and decorations. This year, CEC encourages you to take the necessary time to decorate safely — without skipping any steps.

Before the decorating begins, inspect all the lights you plan on using. Make sure the wires are in good condition — not cracked, brittle, or frayed.

These tips will help with safely decorating your home for the holidays:

- When decorating outside, look up and around for power lines. Never throw holiday lights or other decorations into trees near power lines.

- Be especially careful when working near power lines attached to your house. Keep ladders, equipment, and yourself at least 10 feet from power lines.
- Match plugs with outlets. Do not force a three-pronged plug into a two-pronged outlet or extension cord; or remove the third prong.
- Only use decorations rated for outdoor use.
- Always follow manufacturer's instructions.
- Cords should be plugged into outlets equipped with Ground Fault Circuit Interrupters (GFCIs). Use a portable GFCI if your outdoor outlets are not equipped with them.

CEC's 82nd Annual Meeting

CEC conducted its 82nd Annual Meeting on Aug. 23 at Whitehall Camp and Conference Center near Emlenton. During this meeting, our members re-elected Bette Walters of Forest County and Althea Smith of Venango County to the board of directors.

Almost 1,300 people attended the event. Kentucky Fried Chicken catered the dinner and Hazlett Tree Service donated bottled water. American Pie provided entertainment and a variety of exhibitors attended to provide members with helpful information.

The meeting opened with CEC's Stacey Bechtel singing the National Anthem. Arthur Blum of Shippenville and Gunther Joneikis of Portersville won the \$100 bill credits; James Halstead of Saxonburg, Harry Wagner of Shippenville, Marcella Swigart of Fenelton, Linda Costanzo of East Brady won the \$50 bill credits; and two children who attended won backpacks full of school supplies — among other prizes.

After the annual meeting, the board of directors elected officers Jody Weaver, board president; Kenneth Durrett, vice president; and Althea Smith, secretary/treasurer.



CEC's Board of Directors
Missing: Bette Walters



**2018-2019 Member Aware
Advisory Committee (MAAC)**

Make a Difference: Join ACRE®!

For as little as seven cents per day you can help ensure that the voice of CEC, your electric cooperative, can remain strong in Harrisburg and Washington, D.C.

Seven cents per day is all it takes to join with hundreds of your member-owner neighbors, your CEC board of directors, CEC employees, and tens of thousands of fellow rural electric cooperatives member-owners nation-wide who belong to the Action Committee for Rural Electrification (ACRE) Co-op Owners for Political Action.

By joining ACRE Co-op Owners for Political Action you can be involved in the legislative issues impacting your cooperative. You are directly affected by the energy laws created by legislators. Changes in those laws could mean increased costs, difficulty building or operating power plants or a change in power reliability.

ACRE Co-op Owners for Political Action only supports candidates for State and Federal offices, regardless of political affiliation, who will speak for you and protect interests of you and your fellow member-owners. It is in your best interest to help elect candidates who will work to keep your cooperative successful. Our goal at CEC is to continue providing you with safe, dependable, and affordable electricity. Together we can make a difference.

Many voices joined together have a mighty impact. Please consider adding your voice to our team. Join ACRE Co-op Owners for Political Action by completing the adjacent form and sending it in with your bill. For more information visit our website at www.central.coop or contact your ACRE coordinator, Emily, at 800-521-0570 x2152.

Contributions to the National Rural Electric Cooperative Association (NRECA) Action Committee for Rural Electrification (ACRE) are not tax deductible. Contributions to ACRE are voluntary and will be used for political purposes. You have the right to refuse to contribute without reprisal. Any contribution guidelines presented are merely suggestions. You are free to contribute more or less than the suggested amounts, or not at all. NRECA will not favor or disadvantage anyone by reason of the amount contributed or a decision not to contribute.

Membership Form

Yes, I Want to Join!

There are two easy ways to contribute:

1. Have the amount added to your next electric bill.
2. Submit a check made payable to PREA ACRE.

Add a one-time contribution to your electric bill:

- Regular Member: \$25
- Keystone Member: \$50
- Century Club Member: \$100
- President's Club Member: \$500
- Other \$ _____

Submit a check:

Amount enclosed \$ _____

- Please renew my amount at this level annually.

Membership Information

Name: _____

Address: _____

City: _____

State: _____ Zip: _____

Account: _____

**Federal Election Law requires
the following information for contributions
equal to, or exceeding, \$200.**

Employer: _____

Occupation: _____

Signature: _____

Date: _____

**Return this form to
ACRE**

**c/o Central Electric Cooperative,
P.O. Box 329, Parker, PA 16049.**

Recipe of the Month

Turkey Stuffing Casserole

Ingredients:

- 12-ounce package stuffing mix
- 1 cup water - 3/4 teaspoon salt
- 3/4 cup melted margarine
- 2 packages seasoning (comes with mix)
- 2-1/2 cups cooked, chopped turkey
- 1/2 cup chopped onion - 2 eggs
- 1/2 cup chopped celery - 1/2 cup mayonnaise
- 1-1/2 cups milk - Mozzarella cheese
- 1 13-ounce can chicken broth

Directions: Make stuffing according to box but use the quantities above for the water and margarine. Put half of the stuffing in bottom of a greased 13 x 9 pan. Mix together the turkey, onion, celery, mayonnaise, and salt. Spread this mixture over the stuffing. Put remainder of stuffing on top. Beat eggs and milk together. Pour over entire pan. Refrigerate overnight. Pour chicken broth over pan and bake uncovered at 350 degrees for 45-50 minutes. Remove and spread mozzarella cheese generously over top. Continue baking until cheese is melted.

*Thank you to Louise Sotace
for submitting this recipe!*

CEC Management Team

Matthew P. Boshaw
CEO & General Manager

Dennis W. Beggs
Director of Finance and
Accounting/CFO

Christopher W. Kossman
Director of Information Technology

Stephanie Deal
Director of Human Resources

Fred E. Terwilliger
Assistant General Manager/COO

Lisa A. Hoover
Director of Member Services

Read Power Lines and Win!

Last Issue's Winner:

Tim Curtis of Knox

Last Issue's E-Winner:

Bruce Smith of Knox

Read Power Lines for a chance to win a \$25 credit on your monthly electric bill by completing and returning the quiz below. You can also have a chance at another \$25 bill credit by submitting a quiz online at www.central.coop.

If you don't have access to the Internet, indicate that on the quiz and we'll also enter you in the online drawing. Just complete and enclose the quiz and personal information below and return it with your monthly payment.

1. True or False: At CEC, safety doesn't stop with our employees.

Answer: _____

2. True or False: When decorating for the holidays, ladders, equipment, and yourself should be at least 8 feet from power lines.

Answer: _____

3. True or False: Using glass or ceramic baking dishes in the oven will assist with faster cook times.

Answer: _____

How are we doing? (no wrong answer)

Name: _____

Phone: _____

Acct. #: _____



Central Electric Cooperative

A Touchstone Energy® Cooperative

716 Route 368, P.O. Box 329, Parker, PA 16049

Newsletter Editor: Renee Tritten