

**Inside:
Learn About ...**

CEC Welcomes
Matthew Boshaw

Security Lighting
Options

Safeguarding Your
Appliances



“Watts” Inside

CEC Welcomes
Matthew Boshaw 1–2

Security Lighting for
Peace of Mind 3

Mark Your Calendar for the
2010 Annual Meeting 4

Member Electronic
Payment Incentive 5

Grilled Margarita Chicken
Salad Recipe 6

Board of Directors

James M. Burd
President

Margery S. Terwilliger
Vice President

Althea M. Smith
Secretary/Treasurer

Kenneth Durrett
Robert F. Sterrett
Bette D. Walters
Jody P. Weaver
Richard L. Weaver

CEC Welcomes Matthew Boshaw

Central Electric Cooperative’s main focus, as an electric service provider, has always been our members and exceeding your expectations. As your new CEO and general manager I am committed to continuing this focus and providing you, the member, with affordable and reliable electric service. To help you better understand my commitment to you and my experience in the electric utility industry I am going to share with you some background information on my career.

I hold a B.S. in Electrical Engineering and have almost 20 years experience in the electric utility industry, both in a large urban electric utility and a small rural one. My most recent experiences in this industry are from my positions as distribution engineering and operations



Matthew Boshaw
CEO & General Manager

manager and acting general manager at Central Lincoln People’s Utility District (PUD), an electric distribution utility on Oregon’s coast. A PUD is similar to a co-op in that it is a not-for-profit and was created to serve the public. A PUD is also governed by an elected commission, just as Central is governed by a board of directors. The similarities between a PUD and

**CEC Welcomes
Matthew Boshaw/Page 2**

CEC Welcomes Matthew Boshaw/From Page 1

a cooperative make my transition to Central that much easier. Prior to Central Lincoln PUD, I was employed at Commonwealth Edison Company in Chicago. My positions included project engineer, reliability planner, and emergency restoration of power coordinator. Understanding how both the large urban and small rural electric utilities operate is extremely beneficial to my work here at Central.

Also new to Central Electric is our 2010-2011 Member Aware Advisory Committee (MAAC). This committee reiterates our commitment to you, as members, and our ability to establish effective communication between the members, board of directors and management at the cooperative. The MAAC committee plays an important role in the grassroots development and implementation of many cooperative programs. The committee members are involved in evaluating cooperative policies,



2010-2011 MAAC committee
tours CEC headquarters



CEC's 2010-2011 MAAC Committee

Security lights CEC offers to members:

1. 100-Watt HPS
Yard Light
2. 150-Watt HPS
Big-Yard Light
3. 400-Watt HPS
Floodlight
4. 400-Watt Metal
Halide Floodlight

procedures and services from both cooperative and member view points. So please join me in welcoming the following MAAC members: Charlie and Timi Kost of Armstrong County; Michael and Debbie Markiw, and Dan and Linda Harigan of Butler County; Judy A. Eisenman and William J. Eisenman, Jr., and Randy and Wendy Tharan of Clarion County; Chuck and Joy Holt of Forest County; Charles and Margaret Woods, and Jim and Tina Paich of Venango County; and our seasonal members Larry and Nanette McNeal. I, along with the board of directors, would like to thank the MAAC members for volunteering their time to the cooperative. We are excited to work with you over the next two years.

With that being said, I would like to thank Larry Adams for his many years of service at the cooperative. I would also like to thank Larry and the employees at Central for making this an easy transition and I look forward to meeting you, the members, at this year's Annual Meeting in August.

CEC's Security Lighting Offers Peace of Mind

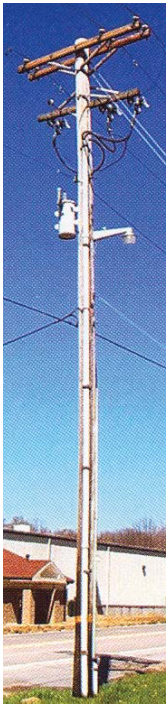
CEC offers many different styles of outdoor dusk-to-dawn security lights to our members. These worry-free lights are installed and maintained by the cooperative on existing poles. All of our lights can be installed on any existing Central pole that has a single-phase transformer or secondary wire.

The most popular light we offer is the 100-Watt high pressure sodium (HPS) Yard Light. This luminaire has a circular lighting distribution and works best for general area lighting in yards, on the farm



100-Watt HPS
Yard Light

or anywhere a little lighting will improve visibility and offer security. This light is only \$8.50 a month. If you like the yard light, but prefer more brightness, then the 150-Watt Big-Yard Light might better suit you. This is a brighter version of the yard light, throwing light in a larger and brighter circular pattern. The Big-Yard Light is available for \$13 a month.



150-Watt HPS
Big Yard Light

When a larger amount of direct light is required we have a 400-Watt HPS or 400-Watt Metal Halide Floodlight. These lights are suited for larger areas, such as a storage space or parking lot. If security is your main concern, we offer the HPS Floodlight.

If the light is going to be used at a location such as a car dealership then the metal halide version is recommended due to the excellent color rendering properties it offers. We install either light for only \$25 a month.

Streets and intersections are best lit using our cobra head fixture. The cobra head is specifically designed to illuminate long and narrow areas. This lamp is available in 100-Watt and 400-Watt versions for about \$8.50 and \$25 a month.

The cooperative is also keeping up to date with new technologies. We are currently testing Light Emitting Diode (LED)



400-Watt Metal
Halide Floodlight

lights and an induction yard light. These super-efficient and long-life lamps are the cutting edge of new light technology and might be offered to CEC members in the future.

For more information on how to take advantage of our lighting program call 800-521-0570 or visit www.central.coop and have one installed today. There is usually no installation charge and it only takes a few days to install. And remember, you never have to maintain a CEC light.



400-Watt HPS
Floodlight

Mark Your Calendar for the 2010 Annual Meeting

Central Electric Cooperative's 2010 Annual Meeting dinner is on Aug. 27 at the Whitehall Campground in Emlenton, Pa. The KFC dinner is served from 5 to 7 p.m. and free to all members and their families.

Return the adjacent coupon and reserve your spot today or call in your reservations at 800-521-0570. Dinner tickets are available at the registration table when you arrive.

Important: You must display a state-issued handicapped parking permit to park in the handicapped lot at this year's Annual Meeting.



Name: _____

Address: _____

Map No: _____ Phone No: _____

Please reserve _____ dinners for me.

By attending the Annual Meeting, I grant CEC permission to use my likeness in photographs in any and all of its publications, including internal and external newsletters and Web site entries, without payment or other consideration.

**Return coupon by July 30, 2010 to:
Central Electric Cooperative, Annual Meeting
P.O. Box 329, Parker, PA 16049**

Tellers Needed for Annual Meeting

The cooperative board of directors is seeking CEC members to serve as tellers for the Annual Meeting on Aug. 27, 2010. The committee tabulates director election ballots returned prior to the meeting, via Internet or by mail, also including votes cast at the meeting.

Eight tellers are needed: one from Armstrong County, two from Butler County, two from Clarion County, one from Forest County and two from Venango County. If more members volunteer than are needed, a drawing will be held. If there are no volunteers the co-op directors will appoint needed tellers.

2010 Tellers Committee

Name: _____

Address: _____

Map No: _____ Phone No: _____ County: _____

**Return coupon by July 30, 2010 to:
Central Electric Cooperative, Annual Meeting
P.O. Box 329, Parker, PA 16049**

Ken's ilowatt corner



www.central.coop
Check it out!
By Ken Maleski
CEC Consumer
Marketing Representative



Safeguard Your Appliances

As homeowners, we have a considerable investment in appliances. If we lose a few of them from a power surge we often turn to homeowner's insurance. Most policies come with a deductible ranging from \$250 to \$500. With such a high deductible it is almost senseless to turn in a claim. Why not consider purchasing some type of surge protection device as "insurance" against a power surge. You can find surge protectors at any major retailer. Quality is the key. Make sure the device has indicator lights that notify the consumer if the protector experienced a surge and is no longer providing protection. A surge is signified when the indicator lights go out.



Central Electric also sells surge protectors. If a member loses a device to a surge, the cooperative replaces the unit absolutely free for up to 10 years from the purchase date.

Also remember that some appliances have additional paths for a surge to find its way into the device. For example, a computer has a phone line connected to gain Internet access. This connection is a direct highway for damaging energy surges. Surge protectors assure your devices are being guarded both on the electric and communication side.

To learn more about Central Electric Cooperative's surge protection program call 800-521-0570 or visit www.central.coop.

Member Electronic Payment Incentive

Would you like to receive a \$5 to \$20 credit on your electric bill, and save yourself time and money? CEC is offering members a billing credit when they sign up for one of our recurring electronic payment methods. This includes bank draft, and auto credit or debit. "Go green" and help the environment by reducing the number of paper checks CEC processes.

To receive a billing credit you must commit and remain on the program for 24 months. This is a one-time credit with amounts ranging from \$5 to \$20 based on the type of electronic payment method you choose.

Sign up today and save yourself and the cooperative time and money!

Contact us at 800-521-0570.

Our representatives are available to discuss your billing credit options. The program runs from May 5 through Aug. 5, 2010.



Recipe of the Month

Grilled Margarita Chicken Salad

Ingredients:

- 1/2 cup frozen (thawed) non-alcoholic margarita mix
- 1/4 cup olive or vegetable oil
- 2 tablespoons white wine vinegar
- 4 boneless, skinless chicken breasts
- 6 cups bite-size pieces assorted salad greens
- 1 cup sliced strawberries
- 1 medium mango, peeled, pitted and sliced
- 1 medium avocado, peeled, pitted and sliced
- 1/4 cup chopped fresh cilantro

Directions:

1. Heat grill. To make dressing stir in margarita mix, oil and vinegar with wire whisk until well blended. Measure 1/4 cup dressing for basting chicken; reserve remaining dressing for serving.
2. Cover and grill chicken over medium heat for 15 to 20 minutes, turning and brushing occasionally with 1/4 cup of dressing.
3. Cut chicken into slices. Toss salad greens, chicken and strawberries in large bowl. Arrange mango and avocado around each salad. Sprinkle with cilantro and drizzle with reserved dressing.

For more great recipes visit:
www.bettycrocker.com

Send Recipes to:

Jessica Brison at jbrison@central.coop or mail to
 Central Electric Cooperative, PO Box 329,
 Parker, PA 16049

CEC Staff

Matthew P. Boshaw
CEO and General Manager

Lisa A. Hoover
Director of Consumer Services

Dennis W. Beggs
Director of Finance

Christina J. O'Donnell
*Director of Communication
 and Marketing*

Stephanie Deal
*Director of Human Resources
 and Administration*

Fred E. Terwilliger
*Director of Engineering and
 Operations*

Read Power Lines and



Last Issue's Winner:

Donald Kunselman of Tionesta

Read your issue of Central Electric Cooperative's Power Lines and win! It's simple — you can win a \$50 credit on your monthly electric bill by reading Power Lines and completing the quiz below.

Contest Rules

1. The contest is open to all Central Electric Cooperative members with active accounts as of the drawing date.
2. Only one entry per member is permitted.
3. Employees and directors of Central Electric, along with members of their immediate families, are not eligible.
4. The winning entry will appear as a credit on the member's bill and may not be redeemed for cash.

Complete, clip and enclose the quiz and personal information below and return it with your monthly payment. For a faster entry you may complete the survey online at www.central.coop/quiz.

1. True or False: CEC's MAAC committee is made up of one couple from each county.

Answer: _____

2. True or False: CEC's Annual Meeting will be held Aug. 26, 2010.

Answer: _____

3. True or False: You can purchase a 400-Watt Floodlight for \$8.50 a month.

Answer: _____

Name: _____

Address: _____

Telephone No: _____ **Account No:** _____



Central Electric Cooperative, Inc.
 A Touchstone Energy® Cooperative

PO Box 329 • Parker, PA 16049 • www.central.coop

Customer Service 1-800-521-0570 • Emergency Outage Number 1-800-282-8610