

Inside: Learn ...

How You Can Make
a Difference

About CEC's
Dusk-to-Dawn
Lighting Program

How to Save With
Load Management

"Watts" Inside

Working Safely	1-2
How Can You Make A Difference?	3
Purchase a Dusk-to-Dawn Light from CEC	4
What is Load Management?	5
Blueberry Coffee Cake Recipe	6

Board of Directors

Margery S. Terwilliger
President

Jody P. Weaver
Vice President

Althea M. Smith
Secretary/Treasurer

Kenneth Durrett
William J. Eichner
Robert F. Sterrett
Bette D. Walters
Richard L. Weaver



PowerLines

Working Safely

by Matthew Boshaw, CEO & General Manager

Central's Member Aware Advisory Committee (MAAC) recently met and one of the topics we discussed was safety. During the presentation we were asked about our safety record. I am happy to say that the employees here take safety very seriously and have an excellent history of working safely. We don't have a work procedure and a safety procedure; we have a **safe work procedure**.

The work performed by our employees is inherently dangerous and requires a great deal of skill and safety training as well as time on the job to be proficient. As our service territory is in a rural setting it is often hazardous just getting to the work site. We are very focused on the potential hazard that working in proximity to energized lines

presents. Our linemen are well trained, wear significant personal protective equipment and use specialized tools while working near energized equipment. The most common injuries we experience have nothing to do with electricity but instead are the sprains and strains associated with physical work. We are required to follow the guidelines of the Occupational Safety & Health Administration (OSHA) and the National Electric Safety Code (NESC) but that isn't what motivates our behavior. We all have families to get home to. We work safely and look out for one another to make sure that happens.

As part of the discussion with the MAAC I pointed out that the safety of our employees is not our only concern. Providing safe,

Working Safely/Page 2

Working Safely/ From Page 1

reliable power to our members is one of our main goals. Most of you are aware of the dangers associated with downed wires but what about when you go to the wires instead of the wires coming to you? Unlike the protected lineman, a homeowner cleaning gutters, trimming trees or

outlets, bare wiring, or moisture near outlets are common sources of electrical hazards in your home.

CEC employees are always looking out for the safety of one another and the safety of our members. Over the next few months you will see more information on our Web site regarding electrical safety. We also provide electrical safety

CEC offers programs to elementary schools in our service territory.

1. Safety City Demonstration
2. High-Voltage Safety Demonstration
3. Career Day Presentation



doing anything else that might bring him in proximity to a power line can be at risk. Oh by the way, power lines aren't just overhead. If you plan a project that has you digging, take the time to identify underground utilities by calling Pennsylvania One Call at 8-1-1 or 1-800-242-1776. Taking just a few moments prior to starting your work to identify potential hazards can eliminate accidents.

Electrical hazards are not just limited to the outdoors. As the weather cools and you spend more time inside, that same time you took to identify hazards outside could protect you from injury inside your home. Over-loaded

programs to elementary schools in our service territory. Programs include a safety city and high-voltage safety demonstration. We also offer a career day presentation with our linemen. You can visit our Web site at www.central.coop or contact us at 1-800-521-0570 with any questions regarding our programs.

Also please feel free to notify us of any CEC facilities needing our attention. As we transition seasons and weather causes outages, you can rest assured the dedicated people at your cooperative are working diligently and safely to provide the level of service you have come to expect and deserve.

How Can You Make A Difference?

Join ACRE Co-op Owners for Political Action and have your voice combined with rural electric members across the country. This program is a nonpartisan political action committee (PAC) established to support political candidates who share common public policy goals with rural electric cooperatives.

With unprecedented interest in energy issues at the federal level and in state legislatures across the country, it is important now more than ever to actively support legislators and candidates who favor fair and equitable treatment for electric cooperatives. The stakes are high and decisions regarding legislation today can have a far-reaching impact on energy costs for years to come. Your contributions will help make sure the voices of rural electric consumer-owners are heard as issues are debated and new laws enacted. All but one percent of contributions, paid in taxes, go directly to supporting candidates.

It is important to be informed of who the candidates are and their issues. Co-op Owners for Political Action members receive the "ACRE Happenings" and "Co-op Owners for Political Action Report" to keep them current on important issues.

Join Co-op Owners for Political Action today by completing the adjacent form and sending it in with your bill. You can also visit our Web site at www.central.coop or contact the ACRE coordinator for Central Electric, Chris Panian, at 1-800-521-0570 ext. 2171.

Contributions to the NRECA Action Committee for Rural Electrification® (ACRE®) are not tax deductible.

Contributions to ACRE are voluntary and will be used for political purposes. You have the right to refuse to contribute without reprisal. Any contribution guidelines presented are merely suggestions. You are free to contribute more or less than the suggested amounts, or not at all. NRECA will not favor or disadvantage anyone by reason of the amount contributed or a decision not to contribute.

ACRE Co-op Owners for Political Action

Yes, I want to join!

Make an annual contribution, or sign up and have your monthly contribution added to your electric bill.

Membership Categories

Regular Membership:	\$25 per year
Century Club Membership:	\$100 per year
President's Club Membership:	\$500 per year

Make an annual contribution

Make checks payable to: "PREA ACRE" Return this form to Central Electric Cooperative, P.O. Box 329, Parker, PA 16049.
Amount enclosed \$ _____

Add monthly contribution to your electric bill

(check a box)

- Regular: \$2.08 a month (\$25 per year)
- Century Club: \$8.33 a month (\$100 per year)
- President's Club: \$41.67 a month (\$500 per year)

Membership Information

Name: _____
Address: _____
City: _____
State: _____ Zip: _____
Account: _____

Federal Election Law requires the following information for contributions equal to or exceeding \$200:

Employer: _____
Occupation: _____
Signature: _____
Date: _____

Short Days and Long Nights ... Time for a CEC Dusk-to-Dawn Light!

Endless summer days are gone again until next year. Instead of kids frolicking in the pool or roaming the neighborhood on their bikes they're stuck in the house doing homework hoping it doesn't get dark before they finish.



Why not consider extending the day and adding some peace of mind with a dusk-to-dawn light from Central Electric Cooperative (CEC)?

For less than 30 cents a day, CEC will install a bright, worry-free, dusk-to-dawn light on any CEC pole that is on or near a pole with a transformer.

We carry several different styles to meet your needs. If you are interested in security lighting, we offer floodlights. Do you have a long driveway? We have streetlights to help light those areas. Whether it is giving the kids a little more playtime, shining some light on your valuable property or helping you navigate that long, rural driveway, we have the light solution for you!

To learn more about this great offer call 1-800-521-0570 or visit our Web site at www.central.coop. Installation usually takes less than a week. And don't worry — summer will be here before you know it!

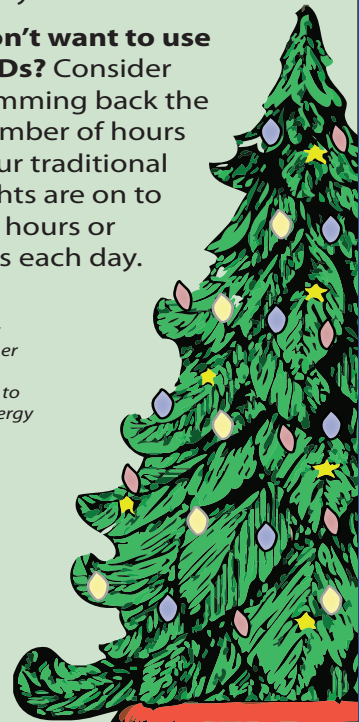


Light up holiday savings with LEDs

Decorating with lights this holiday season? Consider light-emitting diodes (LEDs). They cost more initially but last twice as long as traditional lights, and you'll recover the difference in three to four years.

- **Efficient.** LEDs use between 1 kWh and 3 kWh of energy, compared to between 12 kWh and 105 kWh for traditional lights, saving \$11 every holiday season.
- **Durable.** LEDs last about 4,000 hours. They're also made of plastic and less likely to break.
- **Don't want to use LEDs?** Consider trimming back the number of hours your traditional lights are on to six hours or less each day.

Sources:
Consumer Reports,
Alliance to Save Energy



Ken's
kilowatt
corner



www.central.coop
Check it out!
By Ken Maleski
CEC Consumer
Marketing Representative

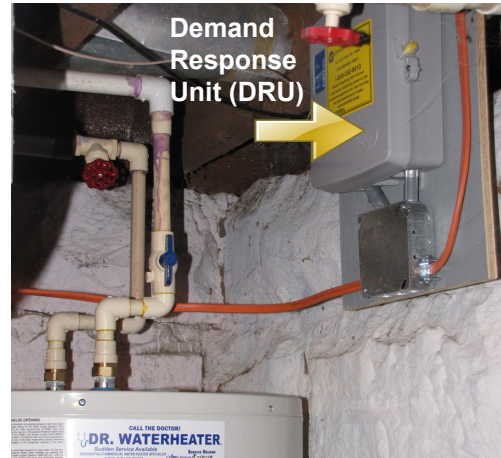


What is Load Management?

What is load management? Simply put, it is a program that remotely turns off certain appliances for a period of time; when power demand costs are expensive. Central Electric Cooperative has participated in this program for over 20 years.

Electric water heaters and electric heating systems qualify for load management. Over 3,000 CEC water heaters have a device known as a demand response unit (DRU) that shuts off the tank's heating elements for a few hours when demand costs are high.

Installation is free to members. You will also receive a \$2.50 credit on your monthly electric bill. Heat pumps, electric furnace systems, electric baseboards and boiler units can receive a 40 percent rate discount for the energy they use by participating. A back-up heating system is required for comfort.



You can learn more about load management by visiting www.central.coop and clicking on the *Energy Savings Tab*. Or call me at 1-800-521-0570, ext. 2172.

Install an A.O. Smith Tank Today!

The Shaw residence in Emlenton is one of many Central Electric members with a water heater on Central's Load Management Program. The A.O. Smith tank was installed in August 2010 by John Relihan, owner of Dr. Water Heater, Inc.

Interested members can purchase the A. O. Smith tank with standard installation for \$349.99 plus tax. For more information please contact us at 1-800-521-0570 or visit our Web site at www.central.coop.

Members who purchase a water heater through this program do not receive a \$2.50 monthly credit.



Kenton Shaw of Emlenton

Recipe of the Month

Blueberry Coffee Cake

Ingredients:

Cake:

- 1/2 cup butter, softened
- 3/4 cup sugar
- 1 large egg
- 2 cups flour
- 2 tsp. baking powder
- 1/2 tsp. salt
- 1/2 cup milk
- 2 cups blueberries

Topping:

- 1/2 cup brown sugar
- 2 tablespoons butter
- 2 tablespoons flour
- 1/2 cup chopped walnuts.

Directions:

1. Mix together butter, sugar and egg.
2. Mix together flour, baking powder and salt.
3. Alternate flour mixture and milk when combining with butter, sugar and egg mixture. Fold in blueberries.
4. Mix together brown sugar, butter, flour and walnuts. Sprinkle on top of cake.
5. Bake in a greased and floured bundt pan at 350 degrees Fahrenheit for 45 to 50 minutes.

Recipe submitted by Marcella M. Swigart

Send Recipes to:

Jessica Brison at jbrison@central.coop or mail to
Central Electric Cooperative, PO Box 329,
Parker, PA 16049

CEC Staff

Matthew P. Boshaw
CEO and General Manager

Lisa A. Hoover
Director of Consumer Services

Dennis W. Beggs
Director of Finance

Christina J. O'Donnell
*Director of Communication
and Marketing*

Stephanie Deal
*Director of Human Resources
and Administration*

Fred E. Terwilliger
*Director of Engineering and
Operations*

Read Power Lines and



Last Issue's Winner:

Samuel O. Swick of Cowansville

Read your issue of Central Electric Cooperative's Power Lines and win! It's simple — you can win a \$50 credit on your monthly electric bill by reading Power Lines and completing the quiz below.

Contest Rules

1. The contest is open to all Central Electric Cooperative members with active accounts as of the drawing date.
2. Only one entry per member is permitted.
3. Employees and directors of Central Electric, along with members of their immediate families, are not eligible.
4. The winning entry will appear as a credit on the member's bill and may not be redeemed for cash.

Complete, clip and enclose the quiz and personal information below and return it with your monthly payment. For a faster entry you may complete the survey online at www.central.coop/quiz.

1. True or False: CEC offers safety programs to all schools in Pennsylvania.

Answer: _____

2. True or False: ACRE Co-op Owners for Political Action is nonpartisan.

Answer: _____

3. True or False: The load management program turns off all appliances in your home during peak demands.

Answer: _____

Name: _____

Address: _____

Telephone No: _____ **Account No:** _____



Central Electric Cooperative

A Touchstone Energy® Cooperative

PO Box 329 • Parker, PA 16049 • www.central.coop

Customer Service 1-800-521-0570 • Emergency Outage Number 1-800-282-8610