

**Inside:  
Learn How To ...**

Enter to Win a \$750  
Visa Gift Card!

Join ACRE

Vote for Our Photo  
Contest

**“Watts” Inside**

- Win a Visa Gift Card or  
Bill Credit 3
- Is it time to invest in a new  
fridge? 3
- Plant Trees Out of Harm’s  
Way 4
- ACRE 4
- Photo Contest Voting 5
- Zucchini Burgers Recipe 6

**Board of Directors**

Jody P. Weaver  
*President*

Kenneth Durrett  
*Vice President*

Althea M. Smith  
*Secretary/Treasurer*

William J. Eichner  
Kenneth D. Etzel  
Nancy Lendyak  
Bette D. Walters  
Richard L. Weaver

# PowerLines



Photographer: Brenda Turner of Harrisville

**For the Community**

*by Matthew Boshaw, CEO & General Manager*

In addition to several other things, Central Electric Cooperative’s (CEC’s) mission statement references providing safe service to our members and a commitment to the communities we serve. Our board members and employees are very active in their communities. I probably don’t need to tell you that because you know and work with them in your communities. I am proud to work with a group of people who recognize the value of community service and are willing to volunteer their time — but it is not to those individual efforts that our mission statement is referring.

I talk about safety all the time, and the safety of our employees while they do hazardous duties of paramount importance. Our commitment to safety, much like our commitment to our communities, doesn’t stop with our system or our employees — it

includes all of you. In June, I asked for you to share with us your own personal safety goals and we would still like to receive them.

I would like to spend a few minutes talking about some of the more visible and tangible ways we are committed to safety, and the communities we serve.

Annually, CEC provides a First Responders Training. This training is intended to educate those who are first on the scene of emergencies. Whether a car accident, house fire, or other tragic incident, police officers, fire fighters, paramedics and others rush to the assistance of our citizens. Some of these incidents can involve electrical hazards. Electricity to a house, a car hitting a pole resulting in a downed wire, or even a tree putting wires on the ground can add a level of hazard to a situation, which first responders may not be familiar. Our training this year included

***For the Community /Page 2***

## *For the Community /From Page 1*

“These two programs are just two of the ways we demonstrate our commitment to safety and to the communities we serve. We are committed to zero electrical-contact accidents, both for our employees and the communities we serve.

If you are interested in more information, or organizing a presentation for a group, please contact us and we will work with you to make it happen.”

Matt Boshaw, CEO  
& General Manager

about 80 first responders from across our service territory. The training included two parts — a classroom session and a live-line demonstration. We do not train the responders to work on or with electricity. We instead teach them what they can expect to see and hear, and how they can keep themselves and the public safe from the additional hazards electricity can add to these dangerous situations. Feedback from our operations personnel has been that the training is working. When CEC arrives at a scene, where police or fire are already on site, the area is secure and the first responders and the public are kept safe from any electrical hazard.

Additional feedback from our linemen has been that we need to expand this training to include the general public, and here’s why: one of our linemen shared a story that is very common during outages. It seems that when a crew arrives on the scene of an outage, our naturally curious and helpful members come out to see if they can find out what is happening, how long the outage might be, and if they can help in some way. While I understand their intentions, these practices can prove extremely hazardous to the member and our employees. First, before the scene is secure, we won’t know where the hazards are which could place you, or our employees, in harm’s way. Next, once the scene is secure, our employees need to be focused on the work at hand, so distraction can be very dangerous. We are considering

how we might be able to expand our First Responders Training to be more inclusive, but in the meantime your awareness and diligence is important.

Another safety-related community program is our Safety City presentation. This is a model version of actual electrical contact incidents that have happened across the country. We typically provide this demonstration to fourth grade classes throughout our territory, but we can tailor the presentation to almost any group, young or old. We discuss the hazards of electricity and what to do in many scenarios. Much like the live-line demonstration in the First Responders Training, there is a visual and audio component to this presentation that is very effective. This year alone, hundreds of people saw this presentation.

These two programs are just two of the ways we demonstrate our commitment to safety and to the communities we serve. We are committed to zero electrical-contact accidents, both for our employees and the communities we serve.

If you are interested in more information, or organizing a presentation for a group, please contact us and we will work with you to make it happen.

# Win a Visa Gift Card or Bill Credit!

CEC is dedicated to providing quality service. To effectively do that, we need member feedback. That's why we're asking you to take part in an important, electronic survey measuring member satisfaction. The process should only take a couple minutes to complete.

The survey will help us gain your thoughts and opinions, and better serve you. It will determine member satisfaction for a variety of topics from across our seven-county service territory. The survey's results will be used for future goal planning.

Members who complete the survey will be entered into a drawing for a chance to win a bill credit or Visa gift card. We're giving away a total of **two \$50 bill credits, four \$100 bill credits, one \$250 Visa gift card, one \$500 Visa gift card, and one \$750 Visa gift card!**

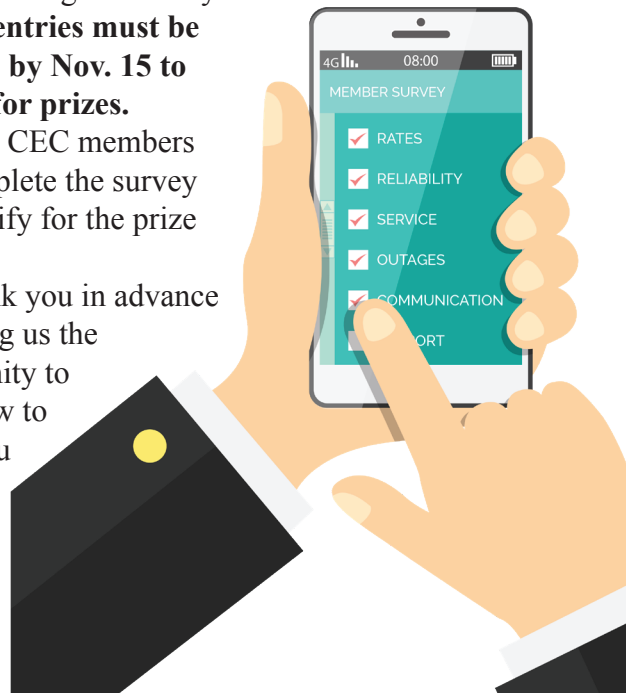
To take the survey visit [www.central.coop/survey](http://www.central.coop/survey). If you don't have access to the Internet,

please contact us to make alternative arrangements for completing the survey.

**Survey entries must be received by Nov. 15 to qualify for prizes.**

Only CEC members can complete the survey and qualify for the prize drawing.

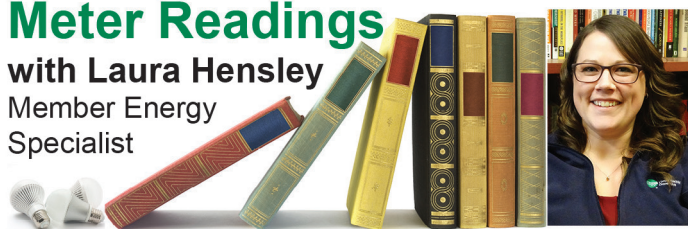
Thank you in advance for giving us the opportunity to learn how to serve you better.



## Meter Readings

with **Laura Hensley**

Member Energy Specialist



Consider replacing older refrigerators. A fridge over 10 years old could cost over \$100 per year to operate. To save the most energy, consider a top-freezer design which Energy Star estimates will use as little as \$45 per year to operate. Whereas, a side-by-side model can cost \$77 per year and a bottom freezer model will cost about \$70 per year.

The most efficient models are between 16 and 20 cubic feet. Buy a unit that meets your needs, and does not exceed them, to avoid paying more than necessary in energy bills. Additional energy is

## Is it time to invest in a new fridge?

needed for extras like through-the-door ice and water dispensers, so be sure to consider the additional cost of those features.

To ensure the most efficient operation of your fridge, set the temperature between 35 and 38 degrees. When possible, place the unit away from heat sources like the oven or dishwasher. Allow space between the fridge and wall to promote air circulation.

Look for the Energy Star logo when buying, and visit [www.energystar.gov](http://www.energystar.gov) for more information about the most efficient options.

CEC currently has a \$100 mail-in rebate for a standard refrigerator and a \$25 rebate for a compact model. Please visit us at [www.central.coop](http://www.central.coop) for an application.

# SAFETY MATTERS

## Plant Trees Out of Harm's Way

Autumn is a great time to plant trees and shrubs. Cool temperatures make it easier to work outside, and adequate moisture ensures that trees will survive through the winter. Safety should also be a consideration in tree-planting. These tips will help you make sure your trees are out of harm's way.

Large trees near power lines are a safety hazard. They can cause fires, electric shocks, and power outages. If you have a tree near a power line, children should not climb it and you should not attempt to trim it. Only tree trimming professionals should trim trees near power lines.

You can avoid this stress by planting the right tree in the right place. Ground hugging shrubs and small trees that reach no more than 15 feet in height can be planted near overhead lines. Trees that mature within a 25 to 45 foot height should be

planted no closer than 35 feet from the power line. Trees that exceed 45 feet in height should be planted no closer than 45 feet from the line.

In addition to overhead lines, buried power lines can also be a problem for trees, and vice versa. If utility crews need access to buried cable, the root system may suffer. Trees and shrubs should not be planted over underground utility lines.

Not only do trees add to the beauty of your landscape, they can also help improve energy efficiency. Shade from trees can reduce the air temperature around your home. Trees can also break cold winter winds. Plant the right tree in the right place and visualize it when it is fully grown. While fast growing trees will reach a mature height sooner, their wood is softer and they are more susceptible to losing limbs in winds and ice storms.

## Action Committee for Rural Electrification (ACRE)

ACRE is the National Rural Electric Cooperative Association's (NRECA's) political action committee (PAC). ACRE was formed in 1966 with the mission of making the voice of rural electric cooperative consumers heard in U.S. Congress. ACRE is among the top 100 largest PACs in the nation with over 29,000 members contributing.

ACRE is truly a grassroots PAC. We are asking you to join ACRE Co-op Owners for Political Action. With your donation, ACRE will make campaign contributions to candidates who support our electric cooperative's goals and share our cooperative values.

For more information on ACRE Co-op Owners for Political Action or eligibility to participate, please contact Emily Bartley, ACRE coordinator, at 800-521-0570 x2126.



# Power Lines

## Photo Contest Voting

After 45 members submitted breathtaking photos for our 2018 Photo Contest, online voting has narrowed it down to five contestants. Please vote from the below photos for the **three** you feel deserve to be our winners! The photo with the most votes will receive first place and a \$100 bill credit, second place a \$50 bill credit, and third a \$25 bill credit. You can also vote on our website until Oct. 19. We will announce the winners in late October and in December's Power Lines newsletter.

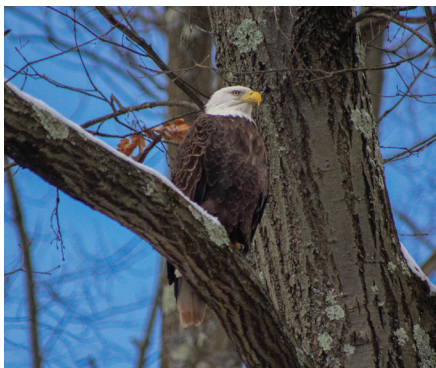


Photo #1



Photo #2

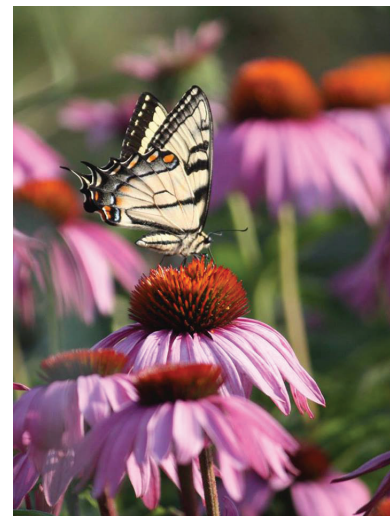


Photo #3



Photo #4

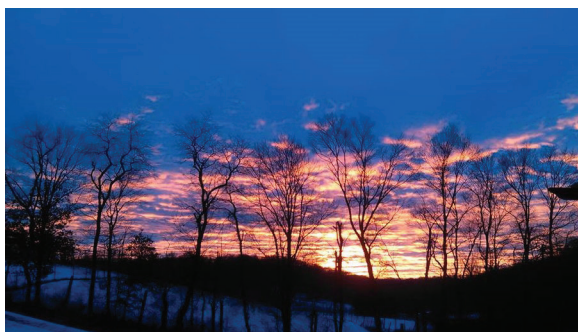


Photo #5



### Photo Contest Voting Form

Name: \_\_\_\_\_

Address: \_\_\_\_\_

Phone: \_\_\_\_\_

**Please check the boxes for the three photos you wish to vote for.**

Photo #1

Photo #2

Photo #3

Photo #4

Photo #5

Return this coupon to CEC by Oct. 19, 2018.

## Recipe of the Month

### Zucchini Burgers

#### Ingredients:

- 2 cups zucchini, shredded
- 1 medium onion, finely chopped
- 1/2 cup dry bread crumbs
- 2 eggs, lightly beaten
- Dash cayenne pepper
- 3 hard-cooked egg whites, chopped
- 2 tablespoons vegetable oil
- 4 hamburger buns, split
- 4 lettuce leaves
- 4 slices tomato
- 4 slices onion

**Directions:** In a colander or sieve, drain zucchini, squeezing it to remove excess liquid. Pat dry. In a small bowl, combine zucchini, onion, bread crumbs, eggs, and pepper. Gently stir in hard cooked, chopped egg whites. Heat one tablespoon oil in a large, non-stick skillet over medium heat. Drop batter by 2/3 cupfuls into oil, press lightly to flatten. Fry until golden brown on both sides. Serve on buns with lettuce, tomato and onion.

*Thank you Joanne McVay for submitting this recipe!*

## Send in your recipes to be shared today!

Send Recipes to: Renee Tritten at [rtritten@central.coop](mailto:rtritten@central.coop) or mail to CEC, P.O. Box 329, Parker, PA 16049

## CEC Management Team

Matthew P. Boshaw  
CEO & General Manager

Dennis W. Beggs  
Director of Finance and  
Accounting/CFO

Christopher W. Kossman  
Director of Information Technology

Stephanie Deal  
Director of Human Resources

Fred E. Terwilliger  
Assistant General Manager/COO

Lisa A. Hoover  
Director of Member Services

## Read Power Lines and Win!

Last Issue's Winner:

**Stacy Weeter of New Bethlehem**

Last Issue's E-Winner:

**Jesse Smith of Parker**

Read Power Lines and win a \$25 credit on your monthly electric bill by completing and returning the quiz below. You can also have a chance at another \$25 bill credit by submitting a quiz online at [www.central.coop](http://www.central.coop).

If you don't have access to the Internet, indicate that on the quiz and we'll also enter you in the online drawing. Just complete and enclose the quiz and personal information below and return it with your monthly payment.

**1. True or False:** The most energy efficient refrigerator design is the side-by-side.  
**Answer:** \_\_\_\_\_

**2. True or False:** Large trees near power lines can cause fires, electric shocks, and power outages.  
**Answer:** \_\_\_\_\_

**3. True or False:** We are committed to zero electrical-contact accidents both for our employees, and the communities we serve.  
**Answer:** \_\_\_\_\_

**How are we doing?** (no wrong answer)  
\_\_\_\_\_  
\_\_\_\_\_  
\_\_\_\_\_

**Name:** \_\_\_\_\_

**Phone:** \_\_\_\_\_ **Acct. #:** \_\_\_\_\_



Central Electric Cooperative

A Touchstone Energy Cooperative

716 Route 368, P.O. Box 329, Parker, PA 16049

Newsletter Editor: Renee Tritten